

# Community News

Your Community Newsletter and Village Voice  
Autumn 2014 Edition

## BFOBRCA CHAIRMAN'S REPORT TO THE ANNUAL GENERAL MEETING FOR 2014

I am pleased to say that the past year has been another very successful one for the Badger Farm & Oliver's Battery Resident's Community Association.

Once again the Trustees have had to spend a considerable amount of money on maintaining the Community Centre. Some of the work undertaken over the last twelve months includes excellent new lighting in the Bushfield Room (which was funded by a grant from Councillor Charlotte Bailey), decoration of the entire building inside and out, a new ramp at the entrance to the Warren to make for easier disabled access and splendid new flooring in the passageway leading to the Warren and Bushfield rooms.

In addition, we are delighted with our new website and I would encourage all residents to take a look ([bfobrca.org](http://bfobrca.org)). I would like to thank Ann Jury who was assisted by Lesley Nguyen and Jan Dawkins for all the hard work and time invested in developing this site.

As ever, on behalf of the Trustees I would like to thank the Badger Farm Social Club for their continued support and also our hardworking and committed staff; Jan Dawkins, Merv Hall and Barbara Angel, who ensure the smooth running of the Centre both front of house and behind the scenes. In particular thanks are due to Barbara for her tireless efforts and ultimate success in considerably reducing our utility bills and Jan for her superb editing of the Community News. We are also well aware that this publication is delivered locally each quarter by a team of dedicated volunteers and to whom we are very grateful.

At present, the Trustees share joint Chairmanship amongst three members. We are always looking for new people to join the Committee which meets once a month for a couple of hours. The meetings are very informal and not time-consuming. If you feel you would like to join us and have something you could contribute to the Association and community, do please contact the office and speak to Jan. We are looking forward to another productive and successful year.

*Rachel Skinner ~ Joint Chair*

BF & OB RCA, Badger Farm Community Centre, Badger Farm Road, Winchester, SO22 4QB

Tel. 01962 868630 ~ Email: [enquiries@bfobrca.org](mailto:enquiries@bfobrca.org) ~ Registered Charity No. 279592

Editorial deadline for Winter 2014 issue:

Friday 7<sup>th</sup> November 2014



# Daren's Garden Care

Good friendly gardener willing to undertake all types of gardening work.

Gutter clearing and washing.

Free quotations.

No job too small.

Call Daren 07717803236

daren007@sky.com



## Bark and Squeak Dog Walking and Pet Service



- First aid trained and fully insured
- Offering a personal service
- Fully trained and experienced with a wide range of animals
- Ex animal management student (Sparsholt)
- Trustworthy and always on time
- Available at short notice
- Looks after your pet in their own home
- Experienced with working with nervous animals
- Can do emergency cover
- Out in all weathers
- Now doing Pet Photography

Contact details :

Tel : 01962 862487

Email : barkandsqueak@hotmail.co.uk

Facebook:

<https://www.facebook.com/BarkandSqueak?fref=ts>

## BADGER FARM PARISH COUNCIL

What a year we are having, very heavy rain, followed by a well deserved heat wave and now torrential rain. I do hope the rest of the year is little more settled. Badger Farm is beginning to look tidier than a few weeks ago. I noticed that even a Letter Box has been given a new coat of paint.

Last year, you might remember, we were talking about our Ridge and the possibility of having cattle up there to maintain the diversity of the nature reserve, which over the years has declined at an alarming rate. Due to staff changes at Winchester City Council, our investigations have been a little delayed, but are now on track. The idea is to let cattle graze up there for part of each year. This is the same scheme which is currently active at Shawford, St. Catherine's Hill, and various other places. The cows keep the undergrowth in order, which encourages more diversity of wild plants, which in turn gives us more insects, butterflies etc. It would also give us a great saving in grass cutting which is a major cost to Badger Farm Parish Council. The cattle will be fenced in, with plenty of access for walkers. They are very gentle, laid back sort of animals, who are not bothered by people or dogs. There is a warden who keeps an eye on them (in turn with Shawford etc.) who will make sure that all is well.

Now on a less pleasant subject – Dog Poo. I know that most dog owners act in a correct manner. But unfortunately not everyone does. So a reminder - Please pick up and dispose of dog's poo either in the designated dog bin, or, failing that, take it home and put it in your own bin. It is very unhygienic, unpleasant, unsightly, and unacceptable to leave dog poo on the grass or ground, or, to leave poo bags in bushes, sides of paths, etc. From time to time a Dog Warden will visit Badger Farm and anyone caught not disposing dog's poo in the appropriate manner could be facing a fine.

The play equipment on Davis is still disintegrating at an alarming rate, and we are planning its replacement. Although we thought they would last a while longer, the very heavy rain we had earlier, has affected the wooden posts. Please be gentle with the swings, as this should help to extend their life a little.

On a happier note, we welcome Simon Fletcher as our newest Councillor. He has joined us at a very busy time with Whiteshute Ridge and the Play Equipment to attend to.

We are pleased to announce that we now have a Badger Farm Parish Council Facebook page - to keep us up to date with what's going on in Badger Farm please 'LIKE' our page [www.facebook.com/badgerfarmpc](http://www.facebook.com/badgerfarmpc) You can also keep up to date with us at [www.badgerfarmparishcouncil.gov.uk](http://www.badgerfarmparishcouncil.gov.uk)

# SOME OF THE COMMUNITY CENTRE ACTIVITIES

ACTIVITY	DAY	TIME	CONTACT	COST	DESCRIPTION
Badger Farm Art Group	Thursday	1.30pm - 4.00pm	Elizabeth Weir 01962 856689 lizbethweir@gmail.com	£6.50 per person	A friendly "drop in" art group providing a "space to paint" in a relaxed setting. All abilities welcome.
Badger Farm ACOL Club	Friday	7.15pm - 10.30pm	Roland Richardson 023 8025 1277	£1 visitors £15 annual	Bridge Club
Brendon Care Badger Farm Friendly Group	Alternate Thursdays	2.00pm - 4.00pm	Catherine Fellingham 01962 857099	£4.00 per session	Friendship for older people. Quizzes, speakers, outings, afternoon tea. New members and volunteers welcome.
Badger Farm Bridge Club	Tuesday	7.15pm - 10.30pm	Fred Hotchen 01794 301185 07771 854 347 fred.hotchen@btinternet.com		Friendly and relaxed local bridge club. New members and visitors very welcome
Badger Farm Pre-School Playgroup	Monday to Friday	Mon.Tues/Wed 9.15am - 3.00pm Thurs/Fri 9.15am - 12.15pm	Denise Tosdevine 07771 798 474	£4.15 per hour	For children from 3 years to school age. Great OFSTED results. Afternoons also available - enquiries to Denise.
Badminton	Thursday	8.00pm - 9.00pm	Wendy King 01962 861525		Fun and friendly for any age and ability. All welcome!
Eucharist (Holy Communion)	Tuesday	10.00am - 11.00am	Rev. Mike Gardner 01962 865240		Church of England Service. All welcome.
Hampshire Wildlife Trust	2nd Wed. of the month	7.30pm - 9.30pm	Loraine 01962 861182	£3.00 per meeting	Illustrated talks on wildlife for all. Contact Loraine for details.
Jo Jingles	Tuesday	9.45am - 10.30am 10.45am - 11.30am	Victoria Smith 01489 877278		Music & Movement for children from the age of 1 year.
Legs, Bums & Tums	Monday Tuesday	9.30am - 10.30am 6.45pm - 7.45pm	Catherine Jones 07990 513 434	£5.00 per class	A fun and friendly class designed to help keep you fit and toned! Discounts available for multiple classes.
National Federation of Spiritual Healers	2nd Saturday of every month.	10.00am - 12.30pm	Doreen Rivett 01980 862285 Doreenrivett@talktalk.net	Donation	Come to our group either for healing or to find out more about healing, our group and training courses.
Parents & Tots	Thursday	1.30pm - 3.00pm	Liz Lindsay 01962 866547	£2 per family per session	All parents, guardians and child minders with children aged newborn to 5 years are welcome. Just turn up on the day!
Royal British Legion	3rd Thursday monthly	7.30pm - 9.30pm	Stanley Judd 01962 869889		A warm welcome awaits you at your local Royal British Legion group meeting.
Slimming World	Saturday	9.30am - 11.00am	Steve Coombs 07788 683 077		A warm welcome awaits you in your local group! New members always welcome.
Weight Watchers	Thursday	9.00am - 11.00am 6.15pm - 7.45pm	0845 073 0460	Weekly meeting fee of £5.99	Your lifestyle, your choice. With Weight Watchers you choose the weight loss approach that works best for you.
Wessex Wargames Club	Tuesday	7.00pm - 11.00pm	Ian Ackerman 01962 624710	£3 per session (first session is free)	Minature wargames and role-playing games of all periods and genres played.
Winchester Country Market	Friday	8.30am - 11.00am	Mrs Tina Sharpe 01962 855977		Fresh produce, cakes and preserves, crafts and plants. All welcome!
Winchester Tae Kwon-Do	Monday Wednesday	6.30pm - 9.00pm	Chris Barrett info@winchestertkd.co.uk	Membership by subscription	6.30pm-7.45pm beginners/intermediates 7pm-8.30pm seniors (black belts to 9pm)
Yoga	Monday Tuesday Friday	9.30am - 11.00am 5.30pm - 7.00pm 1.30pm - 3.00pm	Chris Wyeth 01962 868346	£35 per 5 week sessions	Experience the balancing effect of yoga on mind and body. Stretch and relax into a healthier life.
ZUMBA	Wednesday	1.30pm - 2.30pm	Debbie Woodley 07724 136 428 debbie.woodley@talk21.com	£5 per session	Effective and exhilarating way to tone the body with exercise to lively Latin rhythms using easy to follow steps.

Here are details of just some of the activities that take place at Badger Farm Community Centre. Other hirers may have chosen not to have their details shown. If you are looking for an activity and you can't see it here, please call Jan, the Bookings Secretary on 01962 868630.

## OLIVER'S BATTERY WI

Following a great summer - an outing to Swanage and Corfe; a private view of a wonderful garden in Old Alresford and a cream tea in a member's garden to name a few events. All a good chance to get to know each other better and think of future things that would attract support.

Of course there will always be the Book Club; Knit and Natter or maybe Crochet and Chat but there is room for other activities. If there is an interest in any topic, then it will be arranged, hence the Crochet and Chat as this is answering a request to learn crochet. There will be a Craft Day in October in Romsey for the crafty people. The Winchester Group will be meeting in October with members from all the WI's in the Winchester area and the Autumn Meeting of HCFWI will be held at the Anvil, Basingstoke to hear Michael Portillo speak.

The first speaker in the Autumn will be Louise Watson, showing the art of present wrapping on Tuesday 16 September at 7.45. The subjects covered at the meetings are diverse and very interesting, from Suffering Suffragettes to What the Bride Wore and from Legal Stuff to Saris, Fashion and Culture.

We meet in St Mark's at 7.45 each month and we do really enjoy meeting new people. Whether you are intending to join or just wanting to find out what we are about, please just come along, maybe you would like to phone President Cathy Winter on 01962 620250 or you can find out more from our page on the Hampshire WI website [www.hampshirewi.org.uk](http://www.hampshirewi.org.uk)

## THE WINCHESTER COUNTRY MARKET

Hello again from Winchester Country Market. The Summer has been really wonderful and we have plenty of fresh vegetables and Summer fruit and salad straight from the gardens of the producers to your table. Can't be fresher than that! Time to be giving some thought to the garden for Autumn colour and we have an abundance of plants to choose from.



We also have home made jams and chutneys, home made cakes all fresh with no additives (gluten and dairy free alternatives also) along with special occasion cakes for birthdays and weddings. There is craft to suit everyone from children's clothing, hand knitted garments, jewellery which is so unique you won't see it anywhere else, cards for every occasion and if you want something different just ask and I am sure we can make it for you. The range of our craft is really exceptional. What about



Christmas? It won't be long!! At our **Christmas Fayre on Saturday 15<sup>th</sup> November between 10.00am and 12.30pm** you will find Christmas cakes, puddings and mince pies, all of which can be ordered. You never have to pay to visit us. Just pop in to see what's on offer and have a chat. Watch this space for a Saturday in October for our Autumn Fayre! We very much look forward to seeing you soon!

Best Wishes from us all at Winchester Country Market

Winchester Country Market is held weekly on a Friday at Badger Farm Community Centre from 8.30am to 11.00am. Why not pay us a visit to find out more? If you would like more information please telephone 01962 866340.



## Oliver's Battery Fire Works

Professional family friendly display.

Saturday 15<sup>th</sup> November | Gates open 5.30 for 7.00 display  
Oliver's Battery Primary School Grounds

Refreshments will be available.

Prices in advance -

£2 per child [under 16] ~ £4 per adult

£10 for family [2 adults & up to 3 children]

Email:

[friendsofoliversbattery@gmail.com](mailto:friendsofoliversbattery@gmail.com)

Tel Sarah:

01962275992 / 07904271254

Friends of  
Oliver's  
Battery  
School

**FOBS**

# VHN DECORATING ~ *Female Decorator*

## *Interior & Exterior Painting & Decorating Services*

- \* Free no obligation quotes
- \* Competitive prices
- \* Fully insured
- \* Domestic & Commercial
- \* OAP Discount
- \* Large & Small Jobs Considered

All Work Guaranteed



Contact: Vicky Nash ~ 07966 919 965

email: [vhndecorating@hotmail.co.uk](mailto:vhndecorating@hotmail.co.uk)

Oliver's Battery, Winchester.

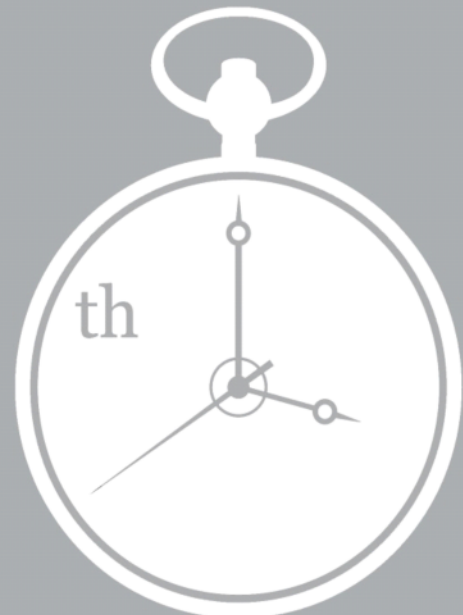
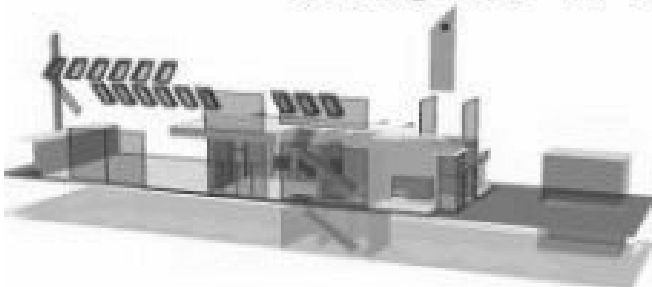


## Architectural Services

Free advice and consultation  
to help realise your building project  
3D visualisations and drawings  
planning applications  
building regulations  
project management

[3D-design@live.co.uk](mailto:3D-design@live.co.uk)

01962 86 44 83



theresa harrison

BEAUTY THERAPY IN WINCHESTER  
SPECIALISING IN HIGH QUALITY TREATMENTS

07940 850713

[WWW.THBEAUTYTHERAPY.COM](http://WWW.THBEAUTYTHERAPY.COM)

# Warner & Richardson Solicitors

Warner & Richardson was founded over 200 years ago and has built a reputation for personal service and high quality advice. With the longest record of service of any Winchester firm we are committed to providing innovative solutions to our clients' problems and needs based on a strong foundation of local knowledge, experience and pragmatic advice.

## Private Client Services

- Property and Conveyancing
- Wills, Probate and Trusts



## Business Client Services

- Commercial Property and Business Leases
- Agricultural Land

Please see our new website at [www.wandr.co.uk](http://www.wandr.co.uk) for further details

Partners: Richard Robson, Robert Goodchild, Scott Burdett and Katharine Palmer

29 Jewry Street, Winchester, Hampshire SO23 8RR

Tel: 01962 868366 ■ Fax 01962 840607

DX2511 Winchester

Email: [lawyers@wandr.co.uk](mailto:lawyers@wandr.co.uk)

Website: [www.wandr.co.uk](http://www.wandr.co.uk)

## WINCHESTER HORTICULTURAL SOCIETY



We had a good summer with plenty of sunshine and all the plants in the garden benefited from the warm weather, provided we watered them regularly. Autumn is likely to bring more rain but hopefully also some more sunny days and a glorious display of autumn colour. We will begin to make plans for next year and perhaps you would welcome some inspiration? What better way than to join us at one of our monthly meetings to listen to an interesting talk and to chat to fellow gardeners. Our programme for the next 3 months includes the following topics:

**September 2014 ~ (Wed 10th) ~** Philip Jeffs of Worthy Plants will present his "15 Unusual Plants for the Small Garden". Do come and find out what they are!

**October 2014 ~ (Wed 8th) ~** Paul Templeton, an expert grower, will talk about "Fruit and Fruit Growing in the Smaller Garden" and we will learn how to fit the greatest variety of both hardy top and bush fruit into our gardens.

**November 2014 ~ (Wed 12th) ~** Local horticulturist and beekeeper Andy Willis will give a talk entitled "Plants and Bees" which will include advice on how to encourage these pollinating insects into our gardens.

Our monthly meetings are held at the Winchester Club, Churchill Room, Worthy Lane, Winchester and start at 7.30pm. Visitors are free. For more details visit our website: <http://www.winchesterhorticulturalsociety.hampshire.org.uk>

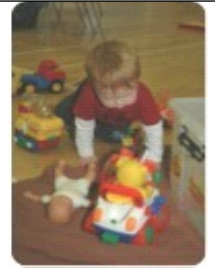
*We look forward to welcoming you!*



## Annual Bridge Tea Thursday 2<sup>nd</sup> October 2014 2pm – 5pm



Once again we are delighted to announce that we are holding our annual Bridge Tea on Thursday 2nd October 2014 at the White House in Littleton from 2pm until 5pm. Come and join us for a friendly competition and a gorgeous homemade tea! For more information or to book a table (£50 per table) please contact Ros Nell at [rosnell83@gmail.com](mailto:rosnell83@gmail.com) ~ Tel: 01962 861448 ~ 83 Christ Church Road, St Cross, Winchester, SO23 9QY. If you wish to make a donation we can email you the application form that includes the option for a donation via the Gift Aid Scheme.



# Badger Farm Toddlers

Thursdays 13:30 – 15:00

Badger Farm Community Centre

Dates 2014

Sep	04 11 18 25
Oct	02 09 16 23
Nov	06 13 20 27
Dec	04 11 18

**Are you a new Mum or Dad in need  
of some adult conversation?**

**Is a house full of pre-schoolers driving you mad?**

**Grandchildren need some entertainment?**

**Self-service baby  
weighing**

When you just want to keep an eye on baby's weight, and either can't seem to get to a baby clinic, or big brother or sister get too bored to wait around - come to us and weigh while they play!

**Come and give Badger Farm Parent  
and Toddlers a try!**

Just turn up on the day – the kettle's always on

**PLENTY OF FUN FOR THE LITTLE ONES - A CUPPA AND A CHAT FOR YOU**



## BADGER FARM TODDLERS ~ A FOND FAREWELL FROM LIZ

Seven years ago, I had been attending Badger Farm Toddler group for about a year when I offered to take it over from a lady who was hoping to stand down after some years. We had relocated to Winchester from London the previous year, and the toddler group was one of the first activities I looked for, having a then 2 year old son.

Taking over the group was a little nerve-racking, my first session had two other Mums(!), but slowly the numbers built up and I found my feet. Numbers have gone up and down periodically, but mostly we have enjoyed busy, vibrant and fun sessions. I have also had fabulous support over the years from a variety of people and organisations, and there have been a couple of times over the years when I might have struggled to keep the group open without their help. Thank you from me to all of them.

Seven years on, I've met some brilliant people through the group, and hopefully they've all made some super friends too. I would like to thank all of the families who have walked through those doors over the last seven years - I've had a blast!

But it's now time for me to move on. I am leaving it in very capable hands – Catherine and Esther will be taking it on. They have both been coming to the group for a while (and I'm sure Catherine was one of my very first Mums with her eldest all those years ago!). I hope to attend with my youngest child every so often too, so I look forward to seeing everyone.

Thanks again everyone, Liz x

## Jo Jingles is Here!

For Music, Singing & Movement Classes  
For children ages 3 months to 5 years  
Parties and Nursery Sessions also available  
**NO JOINING FEE!**

## Develop your child's

- Social Skills
- Language
- Confidence
- Listening Skills
- Co-ordination
- Imagination



Classes in Badger Farm, Fareham, Hedge End, Littleton, Droxford & Winchester

For details call Victoria on 01489 877278 ~ Email [home@victoria-smith.co.uk](mailto:home@victoria-smith.co.uk)

[www.jojingles.com/winchester](http://www.jojingles.com/winchester)

# BEST AUTOCENTRES

£20 OFF MOT OR SERVICING  
£40 OFF MOT & SERVICE COMBINED

WITH THIS VOUCHER

CHICKENHALL LANE, EASTLEIGH - 02380 620200  
WINCHESTER TRADE PARK (next to Tesco) - 01962 866977

[www.bestautocentres.co.uk](http://www.bestautocentres.co.uk)

CARS COLLECTED FROM YOUR HOME IF REQUIRED

*PLUS GREAT DEALS ON TYRES, EXHAUSTS  
BRAKES CLUTCHES & ALLOY WHEELS*



Save a life give blood  
0300 123 23 23

## WHAT WILL IT TAKE FOR YOU TO GIVE BLOOD?

When your son or daughter needs it? Your child. Your mum or dad. Someone you know. You could save their life by giving just an hour of your time. Giving blood is quick, simple and safe. And all that most people feel is the satisfaction that they are helping to save lives. Enrol now and ask any questions by ringing 0300 123 23 23 if you are aged between 17 - 65. Our friendly staff are on hand 24 hours a day seven days a week. Then we'll send you a welcome pack and write and invite you to a donation session near you. You can just turn up but ideally book an appointment in advance for a time that suits you. We'll send you a Donor Health Check to complete and bring with you to ensure giving blood is safe for both you and the patient receiving your blood.

On the day of the donation, make sure you have something to drink and eat so you are hydrated. If you are nervous, bring some music or a book to distract you. A drop of blood will be taken from your fingertip so we can measure your iron level, then we take the donation which takes about ten minutes. After a short rest along with something to eat and drink you can leave and go back to what you usually do, working, driving etc.

Why don't you do something amazing and save a life on **1st October at Winchester Hotel and Spa**, Worthy Lane, SO23 7AB? Times are 1pm - 3.30pm and 4.30pm - 7pm. As Autumn approaches we will need to build stocks to allow for regular donors that may be ill due to poor weather at this time of year so new donors are very much in demand. As you read this the life of someone you know could depend on them receiving blood. You could save their life.

We will also be at **Badger Farm Community Centre on Monday 25th August** between 10.00am and 2.00pm. Please telephone the number above for more information.



A warm welcome awaits you in your local group. New members are always welcome so, come along and join! The group meets at **Badger Farm Community Centre, Badger Farm Road (next to Sainsbury's) every Saturday morning at 9.30am.** If you would like more information, please telephone Steve on **07788 683 077**

Rugbytots is back at Badger Farm Community Centre every Friday afternoon between 1pm and 3pm. For more information contact Phil Rowles on 0845 313 3258, email [phil@rugbytots.co.uk](mailto:phil@rugbytots.co.uk) or visit their website [www.rugbytots.co.uk](http://www.rugbytots.co.uk)





## Summer Fun at Oliver's Battery Pre-school!

An engaging, fun-packed summer term rounded off a great year for children, staff and families of Oliver's Battery Pre-school. There is always so much for the children to get involved in and all of it is designed to help them learn and develop self-confidence and, most importantly, to enjoy. In addition to this year's annual trip to Adventure Wonderland in Bournemouth, where the children had a great time on the rides, we also had our pre-school sports day in which the children loved taking part and receiving their certificates. We were also pleased to once again take the children on a walk and group visit to the park in Oliver's Battery. Of course, the much-loved teddy bears' picnic at the end of term was a fantastic way to round off the year and say a warm farewell to the children who will be starting various schools in September.

### About our pre-school

- Rated overall as 'good' by Ofsted, Oliver's Battery Pre-school achieved 'outstanding' for how well the early years provision meets the needs of the range of children who attend.
- Conveniently located in the grounds spacious grounds of Oliver's Battery Primary School, we provide a safe, engaging and friendly environment for children aged two years to school age.
- We accept all children, regardless of which school they will be going to
- All children are funded from the term after their 3rd birthday.
- If eligible, we accept funding for two-year olds.
- Opening times: 9am-3.15pm Mon-Weds 9am-12.30pm Thurs-Fri

For more information or to pop in and take a look around, please contact Jackie Johnston, Pre-school Leader on mobile 07941 796 958 or email [oliversbatterypreschool@gmail.com](mailto:oliversbatterypreschool@gmail.com)



Bake-Off Cupcake Winners



Sports Day



Adventure Wonderland Fun



## YOUR LOCAL NEIGHBOURHOOD WATCH



I thought it might be useful to ask our newest Badger Farm Neighbourhood Watch Co-ordinator to share her thoughts on setting up a new Neighbourhood Watch area, how she found the process and the response she got from the residents in her road:-

'I'd often seen the Neighbourhood Watch article in the Community News and considered what would be involved and whether it was something I could do, but had never done anything about it until last year. I contacted Sandie for more information as wasn't sure whether it would feel like snooping on my neighbours, or whether there would be a lot of work/time involved as I do run a few businesses so I'm not someone who has lots of spare time. I am however someone who cares about our community and have lived on the estate for 30 years.

The first thing I did was arrange a residents meeting with Sandie and put a letter through my neighbours doors explaining I'd like our road to be a part of NW and was hosting a meeting to which they were invited. There are 31 houses in our road and about 1/3 of the residents attended the meeting ... all of whom were keen to be a part of the scheme. I knocked on all residents doors who weren't at the meeting to ask if they were happy for us to be a NW road .... all said YES, so a 100% success rate. After a huge thumbs up from residents Sandie supplied us with all the literature we needed to be a Neighbourhood Watch area, and helped us through the procedure to become a NW road. As a co-ordinator I get information from Sandie regarding burglaries, etc. and articles on keeping ourselves and our belongings safe. We share information on our own Facebook group and via email ..... anything we think is relevant. We had one event last summer where we got together for a BBQ and fun. It's brought us closer as a community and built relationships. We have more ideas of get together's in the future. We have also now decided to be a 'No Cold Calling Zone' so I've spent time organising that too. It has totally changed my view on what Neighbourhood Watch is really all about ..... it's about working together as a Community.

Currently we only have 2 roads on Badger Farm that are NW areas, I think it would be fantastic to have more. I would be happy for Sandie to share my contact details with anyone on the estate considering NW to answer any questions you may have.'

Sandie Vining – Area Neighbourhood Watch Coordinator for the Winchester City and Winchester Citygate Police Safer Neighbourhood Teams. Tel: 01962 865384 Email: [Sandievining@btinternet.com](mailto:Sandievining@btinternet.com) Web: [www.wehnmw.org.uk](http://www.wehnmw.org.uk)

# Andrew Harris Electrical Services

EST. 1997

ALL DOMESTIC WORK UNDERTAKEN INCLUDING:

- REWIRING
- FUSEBOARD REPLACEMENT
- ADDITIONAL LIGHTS AND SOCKETS
- WIRING FOR TELEPHONE AND COMMS SOCKETS
- INSTALLATION OF LIGHT FITTINGS
- GARDEN LIGHTING AND POWER

ALL ASPECTS OF TESTING INCLUDING:

- ELECTRICAL INSTALLATION CONDITION REPORTS
- P.A.T. TESTING OF APPLIANCES

COMMERCIAL INSTALLATIONS

RETAIL INSTALLATIONS

ALL WORK UNDERTAKEN IN A CLEAN, TIDY  
AND PROFESSIONAL MANNER

FREE ESTIMATES AND ADVICE

63 May Tree Close, Badger Farm, Winchester, SO22 4JF

Telephone: 01962 856805 ~ Mobile: 07956 934 195

Email: andy@adhelectrical.com



## Tai Chi & Chi Kung Exercises for all ages GET FITTER AS YOU GET OLDER!

*Tai chi and Chi Kung have been used for centuries to improve health and longevity. They can be adapted for all ages and abilities and can be seated.*

**New Beginners Class at  
St Mark's Church, Oliver's Battery  
Starts Thursday 3<sup>rd</sup> April - from 12 to 1pm**

Benefits include improvements in

- ▣ mobility & joint flexibility
- ▣ balance & co-ordination
- ▣ stronger legs and back
- ▣ immune system
- ▣ stress levels
- ▣ blood pressure
- ▣ chronic conditions e.g. chest and circulatory problems

Improve your flexibility, hand to eye co-ordination,  
learn to control your temper and get more  
enjoyment out of your life

**Enquiries to Malcolm  
Tel. 07941702267**

Email taichienquiries@gmail.com  
www.taichi4healthandwellbeing.com



## HAMPSHIRE & ISLE OF WIGHT WILDLIFE TRUST

**Hampshire & Isle of Wight** Indoor meetings are held at Badger Farm Community Centre, Winchester, SO22 4QB at 7.30pm in the Bushfield Room unless otherwise stated. Parking is available at the far end of Sainsbury's car park. Entry is £3 per person and includes coffee/tea and biscuits. For further information telephone Loraine on 01962 861182 or Anne on 01962 881312. For outdoor meetings contact Mary on 01962 864440. Future indoor and outdoor meetings are listed below.

**Wed. 10 Sept. 7.30pm ~ Aotearoa - Land of the long white cloud.** Mike Read, renowned wildlife photographer, writer and tour guide will talk about the wealth of species living around the coast and in the almost primeval forests on the spectacular islands of Aotearoa, the Maori name for New Zealand. At Badger Farm Community Centre. Further details from Loraine. Admission £3 including refreshments.

**Wed. 8 Oct. 7.30pm ~ Insects & Flowering Plants.** Entomologist, Jonathan Oakley will show how insects interact with plants and how plants defend themselves against insects. At Badger Farm Community Centre. Further details from Loraine. Admission £3 including refreshments.

**Sun. 19 Oct. 10am-1pm ~ Fungus Foray.** Join fungus expert Phil Budd at Magdalen Hill Down. Booking essential. Further details from Mary. Suggested donation £3.

**Sun. 2 Nov. 9.30am-3.30pm ~ Beaulieu River Bird Walk.** Join John Clark on this bird walk from Beaulieu to Buckler's Hard and back. Meet at Beaulieu Village Car Park (charge applies here). Bring a packed lunch. Further details from Mary. Suggested donation £3.

**Wed. 12 Nov. 7.30pm ~ Whatever Happened to Ratty?** Chris Matcham, a local expert on water voles, will give an illustrated talk on the life and habits of this delightful creature and discuss the reasons for the decline in its distribution. Further details from Loraine. Admission £3 including refreshments.

**Sun. 30 Nov. 10am-3pm ~ Birding at Titchfield Haven.** Join John Clark for a Winter bird walk at this Hampshire County Council Reserve. Park in the Yacht Club Car Park or by the sea wall and meet in the Yacht Club Car Park, Cliff Road, Hill Head. Entry charges to the reserve apply. Refreshments available in the cafe or bring a packed lunch. Further details from Mary. Sorry, no dogs. Suggested donation £3.

**Wed. 10 Dec. 7.30pm ~ Christmas Social & Quiz.** Come and help us celebrate the festive season and take part in a light-hearted wildlife quiz over a glass of mulled wine or non-alcoholic drink and finger buffet. All welcome. Further details from Loraine.

We would particularly welcome help at our evening talks which start again in September.



# THE PARISH OF ST LUKE WITH ST MARK WINCHESTER



## Caring for the Communities of Badger Farm, Oliver's Battery & Stanmore

From the desk of Rev'd. Mike Gardner, Vicar of St Luke's Stanmore with St Mark's Oliver's Battery  
St Luke's Vicarage, Mildmay Street, Winchester SO22 4BX.

Tel. 01962 865240 ~ revd.mike@yahoo.co.uk

Serving the communities of Stanmore, Oliver's Battery and Badger Farm

Seasons come and seasons go ... but they all seem to be at a different time of year each year, it is sometimes hard to work out what the month might be. Fresh fruit and veg. all year round, hot cross buns always on the bakery shelves, Christmas cards available in September [*post early to miss the rush*], fireworks for every occasion.

The set points in our year are not always the ones we want to reference, end of tax year, Birthdays [*another one plus or minus*], TV licence, insurances, car road tax, membership renewals, they all come round so quick.

So what can be our reference point, our anchor, our go 'back to go'. It is often said there are only three certain things, Life, Death and taxes in-between. I see much of all three of these, and walk closely with those dealing with the first two as they prove to be major 'mile posts' on our shared journey together. Some may call it the 'circle of life' others 'the resurrection and new life'. The link that draws these together is not taxes but prayer, expressed through our thoughts and wishes, our hopes and fears, our action and caring. As we give so may we receive as we enter into the Autumn of 2014.



**DEMENTIA AWARENESS**

DO YOU WORRY ABOUT DEMENTIA?  
JOIN EVERYCARE ON 2nd SEPTEMBER 2014  
FROM 14.00-16.00  
AT BADGER FARM COMMUNITY CENTRE  
BADGER FARM ROAD  
WINCHESTER  
SO22 4QB

Refreshments provided ~ No need to book

Any questions please ring Karen at Everycare on

01962 842548 ~ Email [karen.whitmill@everycarehants.co.uk](mailto:karen.whitmill@everycarehants.co.uk)



Your local community care provider

### Local children are looking for your support!



### Winchester based charity **Friends of the Family**

needs volunteers to befriend children and their families who are waiting for support in the local area. So, if you are a caring person who can listen and empathise with others, someone who would like to make a difference to a child's life and you can make a regular commitment of just two hours a week then we would like to hear from you!

### New training course November 2014

For more information about volunteering with our 5s to 13s

Project please contact  
**Samantha Hunt**

Friends of the Family, 16 Colebrook Street,  
Winchester, SO23 9LH  
Tel No: **01962 864466**

e-mail: [volunteeringfotf@btinternet.com](mailto:volunteeringfotf@btinternet.com)  
[www.friendsofthefamilywinchester.org.uk](http://www.friendsofthefamilywinchester.org.uk)

Registered Charity Number 1143462 Company Limited by Guarantee



### MANAGING HEARING LOSS

Do you have a hearing loss? Do you have difficulty following what people say? Do you sometimes feel frustrated and convinced that most people don't understand your problem? If you answer YES to any of the above, why not come along and try one of our LIP READING classes? Classes are run during school terms. They are friendly and informal and you can meet others who understand what hearing loss is all about. We meet at Badger Farm Community Centre every Wednesday afternoon. For further details, contact Jan at the Community Centre (01962-868630) or text Yvonne John, Lip Reading Tutor, on 07789 915 040 Email: [ycjohn14@hotmail.com](mailto:ycjohn14@hotmail.com)

## UPDATE FROM YOUR LOCAL COUNCILLORS

It has been a very busy few months in Oliver's Battery and Badger Farm with many things going on. Oliver's Battery had another very good Fete that was well attended and enjoyed by many people. The Parish Council put in an enormous amount of work to ensure the event ran like clockwork and raised money for local projects.

The **Whiteshute Ridge Project** on Badger Farm has started to progress now the City Council has a new Officer, Susan Bragg, to replace Damien Offer. We had a site visit to the ridge with John Godbold, Badger Farm Parish Council Chairman, so that Susan could see for herself the size, position and ecology of the area. The next step is for the Parish Council to meet with Susan Bragg and Hampshire Wildlife to explore the options that are available to it and the City Council to improve the range of wildlife and increase the variety of plant species. This area is a major asset to Badger Farm, and whilst it is already widely used the Parish Council would like to encourage even more people and the local primary schools to take advantage of what it offers.

The maintenance of Badger Farm has been a problem this year as the exceptional plant growth has shown up the inadequacies of the company who have this contract with the Council. I have had several meetings with the officers and contractors and have been assured things will get better. We will have to wait and see if this happens but the situation will be regularly monitored.

The **City Dog Warden** is now patrolling the area with a view to reducing the amount of dog fouling that has been a problem for some time. It is a serious matter as a lot of it is on paths frequently used by children on their way to school or in play areas. This is a fineable offence and will be strictly enforced.

The **Royal Hampshire Hospital**. We have been become increasingly concerned about the future of the Hospital since Hampshire Hospitals NHS Foundation Trust briefed Winchester City Councillors earlier in the year. The Trust is proposing to build a new Acute Care and Trauma Centre, possibly in the area north of Winchester. In the autumn the Clinical Commissioning Group, which purchases healthcare on behalf of the local population, will consult on proposals to change A&E to a minor injuries unit and remove obstetric services from RHCH. There would still be a midwifery department for low-risk births. It is important to us all that we retain a good local hospital with the best possible range of services that can be safely and efficiently provided. We hope as many of you as possible will make their views known during the consultation. If you would like to know more or be included on the email list for regular updates please let us know.

**Proposed Development at Pitt Vale** to build 500 new houses which is in addition to the 200 being built at Pitt Manor. This number of houses would make it slightly larger than Badger Farm. I am sure this will create a lot of public feeling about many things including traffic congestion, infrastructure and ecology. However, the City Council Planning department intends to resist this proposal vigorously as it is outside the development boundary of the city. We currently send out email updates on this so if you would like to be included please email me, so I can include you, at my email address below.

The **New Play Area on Oliver's Battery** is a great hit with the children as it has been particularly well designed and built. The Parish Council has done an extremely good job on this project and turned this area into a really special space. Try and make a visit as I am sure your children would enjoy it.

City Cllr. Brian Laming 07973 265 028 [blaming@winchester.gov.uk](mailto:blaming@winchester.gov.uk)

City Cllr. Patrick Fancett 07757 508 608 [pfancett@winchester.gov.uk](mailto:pfancett@winchester.gov.uk)



### NEW CARDIOMYOPATHY / HEART FAILURE SUPPORT GROUP FOR WINCHESTER

The first meeting of the Heart to Heart Winchester Support Group is taking place on Wednesday 15th

October 2014 from 6.45 - 8.45pm at Badger Farm Community Centre. The speakers will be Dr Dominic Kelly a Consultant Cardiologist from the Hampshire Hospitals NHS Trust whose talk will be on 'Cardiomyopathy - What is it?' Dr Kelly is the lead Cardiologist for heart failure and also the lead for implantable cardiac devices such as pacemakers and defibrillators. Robert Hall will be talking about the Cardiomyopathy Association of which he is Chief Executive. This meeting will be sponsored by one of the pacemaker manufacturers.

We hope to have two to three meetings a year with speakers and meetings in between where we can share our experiences.

Please email [anne.slaughter@sky.com](mailto:anne.slaughter@sky.com) if you would like to come. You will be very welcome. The Cardiomyopathy Helpline number is 0800 0181 024 and website address is [www.cardiomyopathy.org](http://www.cardiomyopathy.org)

### OVER 60? FEELING ISOLATED OR NEED TO LIFT YOUR SPIRITS?



Then why not come along for a FREE TRIAL to one of our Singing for Wellbeing groups. Our current group is held every Monday, 11am - 12.30pm at The United Church, Jewry Street but from 22nd September we will be starting a second group which will be on Monday afternoons, 2pm-3.30pm at the same venue. Whatever your background or experience you will be made welcome. The sessions aim is to enhance your health and sense of wellbeing through music and song, making the group particularly important for those with memory or other long term health issues. Repertoire is chosen from a wide range of resources, all designed to be accessible and fun for all. Participants are invited to contribute their songs, memories and ideas and are encouraged to be as fully involved with the group as they wish to be. Partners and carers are invited to attend.

Winchester Live at Home Scheme is a local charity offering support and friendship to older people living in their own homes; helping to maintain independent living, improve well-being and reduce isolation. For more information about these and other services we offer please contact us on 01962 890995 or visit [www.wlahs.org](http://www.wlahs.org) ~ Registered Charity No: 1083995  
Winchester Live at Home Scheme, The United Church, Jewry Street, Winchester, SO23 8RZ.



OFSTED inspected in 2011 with very favourable results.

For children from 2 years to school age.

Limited spaces available for 2 – 3 years.

OPENING TIMES (flexible)

Monday – Tuesday – Wednesday ~ 9.15 – 3.00

Thursday – Friday ~ 9.15 – 12.15

**Spaces are now available!**

All children are funded from the term after their 3<sup>rd</sup> Birthday

Funding available for 2 year olds if applicable

Ideally situated in the Community Centre next to Sainsbury's, with a sports hall for physical play and an all-weather outside area with a variety of play equipment. Our staff are highly experienced and qualified and we ensure a high ratio of 1:6 enabling plenty of individual time and attention.

“Children benefit from a range of highly stimulating activities and show exceptional motivation to participate and learn, creating an atmosphere full of excitement, fun and purposeful play.”

The playgroup operates an open door policy so please feel free to call in at any time and see us in action or call the playgroup supervisor

Mrs Denise Tosdevine on 07771 798 474 out of playgroup hours.



**ZUMBA FUN & EXERCISE FOR ALL BADGER FARM PRE-SCHOOL!**

The children and staff from Badger Farm Pre-School were delighted and excited when they were very kindly invited by Debbie Woodley, who runs a weekly Zumba fitness class at Badger Farm Community Centre, to join her and other participants for a bit of exercise, fun and laughter. The children (and staff!) thoroughly enjoyed this session and much fun was had by all. Many thanks to Debbie and her ladies!

**Winchester Fibromyalgia Support**

**Monthly Meetings on Mondays**

10:30 - 1:30 at

Badger Farm Community Centre  
Badger Farm Road, Winchester, SO22 4QB  
Disabled Access

Open to:

FM/CFS sufferers, their partners, family and carers

Entry £2 members and £3 non members

Friendly support, open discussion, professional speakers, quarterly newsletter.

Help yourself to better understanding and manage this debilitating condition.

For more information contact us on

Tel. 0844 887 2608

WFS email address: winfibrosupport@gmail.com

Working with FMA UK - www.fmauk.org



**THE ROYAL BRITISH LEGION  
WINCHESTER & DISTRICT BRANCH  
NEW MEMBERS WELCOME**

The Royal British Legion was formed by Earl Haig in 1921 for the benefit of Ex-Servicemen and Women. They have 7 homes and 3 convenience homes which are now known as “Poppy Breaks.” In 1970 the Queen, in recognition of the work they do, granted them the “Royal” seal of approval.

Local meetings are held in Badger Farm Community Centre every third Thursday at 7.30pm in The Whiteshute Room from January to November. Anybody wishing to attend would get a very warm welcome.

Anyone can join the Legion - whether or not you have a connection with the Armed Forces. As well as providing financial, social and emotional support to millions who have served or are currently serving in the Armed Forces, and their dependants, the Royal British Legion is one of the country's largest membership organisations with over 400,000 members nationwide and overseas.

For further information please contact:  
**01962 869889**



Do you have some time to spare? Would you like to help the local community and become one of our much valued distributors of Community News? We are always looking for volunteers. If you would like to help us, please telephone Rachel Skinner on 01962 868653 to find out more. She would be delighted to hear from you and you will be doing something for the local community!!

# CARPET & UPHOLSTERY CLEANING WITH NO VAT!!!

MARTIN TURVEY

Professional Cleaning Services

01962 733602 [www.martinturvey.co.uk](http://www.martinturvey.co.uk)

- \* Carpet & Rug Cleaning
- \* Upholstery Cleaning
- \* Carpet & Fabric Protective Treatments
- \* Leather Furniture Cleaning



## Hampshire Valeting Services

Professional Mobile Caravan & Motor Home Valeting  
Cars - Caravans - Coaches - Mini Buses - Motor Homes -  
Static Caravans - Trucks - Vans

Have your Caravan or Motor Home valeted  
at Home, Storage Site or our Workshop  
Specialists in Caravan & Motor Home Valeting  
Good Reputation  
Quality Guaranteed  
Fully Insured



We are an Authorised Supagard Dealer Providing  
Paintwork & Interior Protection *Collection & Delivery  
Service*  
Please call for further details



Our services include  
Exterior Valets  
Interior Valets  
Upholstery Cleaning  
Carpet Cleaning  
Paintwork Seal & Protect



# 07989 830417

[www.hampshirevaletingservices.co.uk](http://www.hampshirevaletingservices.co.uk)  
[sales@hampshirevaletingservices.co.uk](mailto:sales@hampshirevaletingservices.co.uk)

City &  
Guilds  
NPTC  
Qualified

# Alexander GARDEN SERVICES Winchester

**Hedge Cutting - Fencing**  
**Garden Tree Work - Garden Clearance**  
**Paths & Patios - Landscaping**  
**Water Features - Garden Makeovers**  
**- Fully Insured -**

If you are looking for someone to take on those larger garden jobs such as tree maintenance, repairing or replacing fences, laying paths and patios or even a full garden makeover, then look no further... we offer a range of services designed to take the strain out of gardening so you can fully enjoy your garden all year round.

*Call for a friendly & efficient local service*

**01962 717735 • 07971 529217**  
[www.alexandergardenservices.co.uk](http://www.alexandergardenservices.co.uk)

## WINCHESTER EXECUTIVE TRAVEL

We are based in Oliver's Battery, Winchester. Specialising in airport transfers and long distance travel. All drivers are CRB checked by Winchester City Council and we offer chaperoning for unaccompanied minors. Providing a polite, professional service, all vehicles are kept to a very high standard. We use Mercedes E Class cars and also have a long wheel base 8 passenger VW Transporter, ideal for evenings out, airport or dock transfers. We are happy to discuss all your specific requirements.

All major credit cards accepted in car or via phone.

Book online at:

[bookings@winchesterexecutivetravel.com](mailto:bookings@winchesterexecutivetravel.com)

**Tel: 01962 676676 or 07795254193**

114 Oliver's Battery Road South, Oliver's Battery,  
Winchester, Hampshire, SO22 4HB - 01962 940101



## AN UPDATE FROM STEVE BRINE, MP FOR WINCHESTER

Since my election in May 2010, I have organised a series of open meetings to debate some of the key local, national and international issues of the day. My Ask the ... series has become well known for tackling the big subjects and they have been well attended each time. We began with ASKtheMINISTER to debate UK Aid policy in 2012, continued with ASKSWT talking train services in 2013 and ASKtheNHS earlier this year heard of plans for a possible reconfiguration of hospital services in the local NHS.

This month (September) I will be organising a second ASKtheNHS event, this time focused specifically on obstetric care and maternity services. It will be a chance to hear about potential changes at the RHCH in this key area and to ask senior clinicians the tough questions I know we all have. As a parent of two little ones myself, Susie and I certainly have many. The meeting will be 10-12 on Saturday 20th September in central Winchester. Please check [www.stevebrine.com/asktheseries](http://www.stevebrine.com/asktheseries) for further details and how to register.

The other thing I have done every Summer outside of election year itself is hold my Summer Tour. This year it contained more dates than ever before and the idea was the same as usual; to get out and meet as many constituents as possible while Parliament is in recess and when the BBC like to tell you all MPs are on the beach. This year I once again held a Supermarket Surgery at Badger Farm Sainsbury's (pictured) and it was a great success.



Thank you so much to the in-store team for making us so welcome and to so many local residents who stopped to chat in the middle of the weekly shop. I picked up lots of new casework but if, at the same time, I provided a welcome distraction from the tedium of food shopping, I am at your service!

Finally, I was on South Today recently speaking about Linden Homes' attempt to force 500 houses on the Pitt Vale site. To be clear, this is not Pitt Manor (where 200 houses are already being built) but the greenfield site behind the filling station between Winchester and the village of Pitt. As I said to the BBC, we are not anti-development in Winchester, infact we are more than doing our bit to address the housing shortage in this country - with Barton Farm and Pitt Manor for example - but this is just too much.

The City Council should have no truck with any future application for this site because we have a Local Plan and this site is not needed to fulfil its obligations. I believe the vast majority of my constituents will have no truck with it and their MP certainly does not. You can visit my Pitt Vale pages online at [www.stevebrine.com/pittvale](http://www.stevebrine.com/pittvale) for more information.

Much more about my work as your local MP, in Winchester and across Oliver's Battery & Badger Farm, via [www.stevebrine.com](http://www.stevebrine.com) or on 01962 791110.

Steve Brine ~ MP for Winchester



Ditch the workout, join the party!™

## Badger Farm Community Centre

**ZUMBA® – an exercise class to lively Latin rhythms, using simple, easy to follow steps.**

**No partner required!**

**A fun, effective and exhilarating way to tone the body and stimulate the mind!**

***Designed for adults of all ages and fitness levels – not just the fit “20-somethings”!***

**So, if you like Latin music and want to keep fit, come and give ZUMBA® a try!**

# Wednesdays, 1:30 – 2:30 pm

Pay as you go, £5.00 per session

**For further information, call Debbie on: 07724 136428 or email:**

[debbie.woodley@talk21.com](mailto:debbie.woodley@talk21.com)

Zumba®, Zumba Fitness® and the Zumba Fitness Logos are registered trademarks of Zumba Fitness, LLC. Used under licence.



## ANN'S COMPUTER CORNER

Welcome to a new and regular feature in Community News. Ann Jury is a local person who runs her own IT training and support business. She has kindly agreed to write a column each quarter offering advice and news within the IT world.

1971 saw the first computer virus—Creeper. It harmlessly copied itself and displayed the message "I'm the Creeper, catch me if you can!" Reaper swiftly followed. Its sole aim was to find and delete Creeper and was effectively the world's first anti-virus. In the decade that followed, the few viruses created were simply experiments to push the boundaries of computer science.

Forty-plus years on, things have changed. While I'm sure some of today's viruses are still geeks' pranks, most have a more deceitful purpose. Now known as malware—malicious software—along with viruses, there are worms, Trojans and spyware, designed by criminals to defraud you by stealing your information or taking over your system. Independent testers estimate that there are 55,000 new malware variants released every day. This sounds scary but, just as Reaper was created to eliminate Creeper, there is now a whole industry devoted to the control of malware and you should take advantage of the tools they provide.

I suggest a three-pronged approach to safeguarding your computer. Firstly, install and use a regularly updated anti-virus program. You don't have to pay for this—the makers of respected anti-virus packages also offer excellent free versions. Highly rated are AVG ([free.avg.com](http://free.avg.com)) and avast! ([www.avast.com](http://www.avast.com)); both are simple to use and have their virus definitions (the information they use to identify viruses) updated every few hours.

Secondly, be aware that no anti-virus is 100% infallible so some malware will inevitably sneak through. Malwarebytes Anti-Malware ([www.malwarebytes.org](http://www.malwarebytes.org)) is excellent at finding this and cleaning it up. Unlike other anti-virus software, the free version of Malwarebytes doesn't run all the time so you need to make sure that you scan your system with it on a regular basis.

Thirdly, just take care. Don't open suspicious email attachments and don't go to untrustworthy web sites. It's also good practice to run a quick virus-scan on any file you've downloaded from the internet before you use it.

While the majority of malware is designed to attack Windows users, other systems can be affected too. In 2012, Apple dropped claims that Macs can't get viruses after a widespread Trojan attack. Two years before that, the first Trojan targeted at Android systems was discovered. Yes, even your smartphone can be infected, so make sure you have a good anti-virus on that too!

Whatever system you use, you needn't be scared of malware. As JR Rafael blogs on Computerword, "a little caution and some common sense will go a long way in keeping you safe from the big, bad virus monsters lurking around our virtual worlds."

### **Ann Jury**

*Ann is the founder of Winchester Computer Tutor ([www.winchestercomputertutor.co.uk](http://www.winchestercomputertutor.co.uk)), which offers good-value, friendly 1-to-1 tuition for less-confident computer users.*

## **BFOBRCA PHOTOGRAPHIC COMPETITION FOR OUR NEW WEBSITE**

You may recall in the Summer edition of Community News that we were very proud to launch our new website - [www.bfobrca.org](http://www.bfobrca.org) and in connection with this, we ran a photographic competition, the winning entry of which would be featured on the home page. Sadly, we have had to withdraw the competition due to lack of entries. We were very disappointed at the response as we had hoped to receive many splendid snapshots of the very beautiful surrounding area, particularly at this time of year, which could be featured on the website. We may re-launch competition later next year.



## **WINCHESTER SUPPORT GROUP**

The National Osteoporosis Society offers support to people with osteoporosis and their families and carers through a range of detailed information booklets and leaflets, a national telephone helpline and a network of regional support groups. The Winchester Support Group meetings are held in a friendly atmosphere for support, advice and information. Members are welcome to bring family and friends as guests. Meetings take place on alternate months at St. Peter's Pastoral Centre (opposite the Library Discovery Centre,) Jewry Street, Winchester, SO23 8RY. Support group contacts are Anne on 01962 864410 and Pam on 01962 866152. The programme for the rest of 2014 is below:

**Thursday 2 October at 7.00pm** ~ ANNUAL MEETING followed by "Osteoporosis Update" ~ Speaker, Dr Neil Buchanan, Consultant Rheumatologist, R.H.C.H.

**Thursday 4 December at 12.30pm** ~ Christmas "Bring & Share" Lunch ~ "Fire! Fire! Fire!" ~ Speaker, Richard Anderson, Fire Officer  
Raffle & Refreshments at each meeting ~ £2 donation appreciated to cover expenses ~ All Welcome. The National Telephone Helpline number is 0845 450 0230 [www.nos.org.uk](http://www.nos.org.uk) ~ email [info@nos.org.uk](mailto:info@nos.org.uk)

# Secret Garden Tree Services



Specialising in small tree and garden maintenance.

Fully Qualified, Insured and Professional Service.

Over 6 years Experience.

Contact Laurie on:

T: 01962 621813 M: 07933 514455

[www.secretgardentreeservices.co.uk](http://www.secretgardentreeservices.co.uk)  
[secretgardentrees@gmail.com](mailto:secretgardentrees@gmail.com)



**DEREK OSGOOD**  
Motor Care

## New MOT bay!

- MOT work
- air-conditioning
- exhausts
- clutches
- brakes
- timing belts
- services

**almost on your  
doorstep ....**



**Enmill Lane, Pitt, Winchester - 01962 840 144**  
[www.derekosgood.co.uk](http://www.derekosgood.co.uk)



**Our MOT bay is  
now open.**

**Book online or  
phone.**



## OPTIMISE YOUR MIND

Book your place now!



Life changing seminars giving you the power to change your mindset and change your world. Available in Basingstoke and Winchester these seminars are a must for only £10 per person.

NLP Practitioner, Personal Performance Coach and Hypnotherapist Claire Newman gives you insight into concepts and beliefs that can change your life. Optimum Mind Seminars give you strategies to change your mindset and create the future you want.

Seminar	Winchester (Mondays) 6.30pm-8.30pm	Basingstoke (Thursdays) 6.30pm-8.30pm
Optimum Mindset - You Can be Happy Now	8 September 2014	11 September 2014
Optimum Confidence	6 October 2014	9 October 2014
Optimum Goal Setting	10 November 2014	13 November 2014
Managing Stress, Anxiety and Overwhelm	8 December 2014	11 December 2014

Book now at: [www.optimumminds.co.uk](http://www.optimumminds.co.uk) tickets must be pre-booked.  
For further information email: [claire.newman@optimumminds.com](mailto:claire.newman@optimumminds.com)



Are you interested in learning more about dementia? Would you like to help raise awareness and become a Dementia Champion?

More and more people in our local area are living with dementia. Nobody knows if they are going to get dementia, yet it is the condition that people aged over 55 fear the most (Source: YouGov 2011).

Andover Mind is working to raise awareness of dementia across Hampshire so that people can have a greater understanding of the condition, including how to recognise the signs and symptoms and be aware of the difficulties that people with dementia can face.

Volunteers are needed to help us deliver information sessions in the community. Full training is provided on a free one day course. You will learn about this condition which can affect people in so many different ways. You can become a Dementia Champion, run your own sessions in your local area and pass on your knowledge to people.

If you would like further information please contact Julie Eden on 07810 283813 or email [julie.eden@andovermind.org.uk](mailto:julie.eden@andovermind.org.uk)

# Stanmore Primary School

*Be the best that you can be...*

It's the start of a new school year here at Stanmore and the children are busy adjusting to school life and their new classes and teachers. It's been lovely getting to know our newest pupils and they are all settling in well and getting used to being at 'big' school. Here are just a few of the highlights from last term – those hot summer days seem a long time ago now...

**Lest we forget...** As Great War Centenary commemorations take place throughout the country, Stanmore School marked the milestone by suspending normal timetables for a week last term and focusing on different aspects of the conflict.

Pupils in KS1 looked at how animals were used – everything from war horses to rescue dogs and Year 3/4 pupils designed propaganda posters encouraging young men to join up and fight for their country. They then discovered just what it felt like to be a new recruit when they were drilled in the playground by Sergeant Major Read and his trusty Corporal, Mrs Petts....!

Year 5/6 were fascinated by the historical artefacts they found in a talking box from Hampshire Wardrobe. In addition to the soldier's uniform and spent bullet shells there were postcards from family members, a well-loved bible and a lock of hair in a locket – poignant reminders of home that gave a real sense of how difficult life must have been in the trenches. Later in the week they discovered just what it felt like to be a WW1 soldier when they constructed a defensive position in the school grounds with the help of a Corporal from Winchester Army Training. It was hard physical work and gave the children a new found respect for young men involved, many of whom were only a few years older than them.

**An amazingly fabulous amount...** That's what Wells for India exclaimed when Year 3/4 handed over their cheque for £1,682.17. The children had raised the money after hearing about children in Rajasthan who are unable to go to school as they have to fetch water each day for their families. Each pupil devised their own sponsored event, everything from cycle rides, swims, netball throwing, skipping, keepy uppies, walking up St Catherine's Hill to surviving on limited water for a day – you name it they thought of it! Wells for India are building water tanks which catch rain water and this money will provide funding for 6 tanks. This means children from those families will now be able to go to school. Well done Year 3/4!

**Action packed...** The end of the year was the usual jam packed helter skelter mixture of Sports Days, our lively Year 6 production, 'Pirates of the Currybean', The Queen of Hearts tea party on the front field, the Summer Fair, a fantastic talk by award winning author Liz Pichon, our top 10% enjoying a fun day out at Moors Valley, singing at the Hat Fair, a world record ukulele attempt at St Mary's Stadium and our poignant Year 6 Leavers Service in Winchester Cathedral. Phew! Thank goodness for the holidays....

**Coming soon...** As the new term begins we are looking forward to our annual Book Week which begins on Monday 20th October 2014. This will include a Book Fair, a dressing up day and a guitar playing poet – sounds fun already! Our Christmas Fair will be on Friday 5th December 2014 from 3:30pm – 5:30pm. Put the date in your diary now – it'll creep up before you know it!

For details of all the latest happenings at school, visit our website at: [www.stanmore.hants.sch.uk](http://www.stanmore.hants.sch.uk) And if you would like to visit the school, please call 01962 852941 to make an appointment. Our Head, Mrs Justine Brooks would be delighted to show you round.



## BADGER FARM SOCIAL CLUB

We are situated in the Community Centre and welcome anyone from the community to pop in and see what we have to offer. We are open Sunday 12noon - 10.30pm, Mon to Thurs 5pm - 11pm, Friday 4pm - 12am and Saturday 12noon - 12am. Membership is available for residents of Badger Farm and Oliver's Battery and surrounding areas for only £25 for a family, £20 for a single and £10 for a concession. We have men's and ladies darts teams, pool teams, a football team and a crib team. If you are interested in joining any of the teams, pop in and speak to Mel at the Club. We have two screens showing a range of sports and free Wi-Fi. We have 4 real ales and many other drinks available. Why not pop in to see what we are up to. We hope to see you soon.

twitter @bfscorguk <http://bfsc.org.uk> email [info@bfsc.org.uk](mailto:info@bfsc.org.uk)



We are a small, friendly group of people who meet every Wednesday at Badger Farm Community Centre during term time to study intermediate level Spanish. We are very keen to welcome new members to our informal classes so, if you are interested, please email Pam Holland on [pozzie\\_pam@hotmail.com](mailto:pozzie_pam@hotmail.com) or contact Jan at the Community Centre on 01962 868630.



## BADGER FARM ART GROUP

Do you enjoy drawing and painting? Why not join our friendly art group on Thursday afternoons at Badger Farm Community Centre? All levels of skill and experience welcome. Sessions run by professional artist. Further details from Liz Weir Tel. 01962 856689 ~ Mobile 07783 695 220 or Email [lizabethweir@gmail.com](mailto:lizabethweir@gmail.com)

**Did you know?**

The Dementia Friendly Community project has launched successfully five Dementia Friendly High streets in Hampshire - in Fareham, Fleet, Lyndhurst, Romsey and Alton. Many towns and villages in the county are planning their actions towards becoming Dementia Friendly too. Presently in Winchester we are working towards becoming the first Dementia Friendly High Street in a Hampshire city! The official launch will be this October at Winchester Guildhall.

**Why is this important?**

In Hampshire alone there are around 18,500 people with dementia and a 30% increase in diagnosed cases is expected over the next 7 years. We know that two thirds of the people with dementia are living in the community supported by a family member. We all need to reach out to those people and make sure they feel understood and supported by their communities.

**What is a Dementia Friendly Community?**

It is one that will make it possible for the greatest number of people to live a good life; where people with dementia are enabled to live as independently as possible and to continue to be part of their community, but at the same time are met with understanding and given support when necessary.

**What can I do to get involved?**

If you are an individual – find out more and volunteer to support the work of Dementia Friendly Hampshire. Become a Dementia Friend, talk about dementia and challenge the stigma!

If you are a business – find out more and sign to the Hampshire Dementia Action Alliance. Pledging your commitment and support would make a positive difference to the quality of life for people with dementia; your staff would be more confident and you would be able to network with other HDAA members. It is free to join and we will guide you every step on the way.

**Where can I find out more?**

Follow this link to our website: <http://www3.hants.gov.uk/adult-services/dementiafriendly.htm> or contact your local area co-ordinator for Winchester Vessi Wharton – Tel: 07827 318032 - email: [vessi.wharton@andovermind.org.uk](mailto:vessi.wharton@andovermind.org.uk)



**OLIVER'S BATTERY PARISH COUNCIL**

The makeup of Oliver's Battery Parish Council has changed following the local elections held in May 2014. Four existing councillors, Maggie Collin, Jane Gagel, David Kirkby and myself were all re-elected to the Parish Council. Sara Outlaw, Mark Pyke and David Boul did not seek re-election to the Council and so have stood down. At our July council meeting it was agreed to co-opt Connie Leach and Tom Gernon to the council bringing our number up to six councillors.

**New Play Equipment**

The installation of new younger children's play equipment has been completed at the recreation ground. Most of the existing play equipment has been replaced, although some of the "toddlers" components have been retained. The design of the new equipment was the result of feedback received following an article in our magazine and a public consultation held in November 2013. The new equipment is already receiving a lot of favourable comments and looks likely to be well used by the younger members of our community.

**Recreation Ground**

The temporary footpath from the car park to the Multi-use Games Area (MUGA) is to be replaced with a permanent footpath and the embankment alongside the MUGA is to receive topsoil and grass. The trees on the west side of the recreation ground are to be thinned out to improve the visibility and safety of the children's play area.

**Fete**

The fete held on 7 June was a great success and enjoyed by many families and members of our local community. There were more than sixty people involved in running the fete on the day and many months of work went into planning an excellent afternoon of activities and fun for all ages. The Council have had lots of feedback from people who thoroughly enjoyed themselves which was down to the effort put in by all involved. Enough money was received from the fete to not only cover expenses put to give a surplus which can be used for grants to local organisations in the Parish over the next year.

**New Map Board**

There are numerous beautiful walks around Oliver's Battery and we are keen to enable you to explore them. A map board has been prepared showing rights of way and walks in a pictorial way, as represented by a local artist, and this will be located by the recreation ground.

Brian Mitchener ~ Chair, Oliver's Battery Parish Council ~ [cllr.mitchener@oliversbattery.info](mailto:cllr.mitchener@oliversbattery.info) - 01962 623585



## NATURE NOTES FROM OLIVER'S BATTERY



While walking my dog early one morning during this long spell of summer weather I stood below Yew Hill to observe a buzzard circling against a clear blue sky as she searched for the movement of prey amongst the long grasses

below. The breeze gently rippled the field of grass like waves on the sea but all that existed at that moment was the bird and I. Slowly, in small stages she began to drop, then suddenly accelerated, and disappeared. Unlucky this time, she rose again to continue her mission. Apart from the sighing of the breeze in the trees all was silent.

There is very little birdsong now the rearing of young is over and birds go into moult so I must keep my promise to say something about the markings on their eggs. Shells are formed by calcium carbonate, basically white, but the colour of passerines' (perching birds - sometimes referred to as songbirds) eggs is formed by different pigments some giving green or blue and others producing reds and browns as base colours or as spotting. Non-passerines mostly have white eggs except in some ground-nesting birds such as nightjars where camouflage is needed and the cuckoo which has to match the passerine host's eggs. Tree nesting birds usually have blue or greenish eggs, either spotted or unspotted while those that build in bushes or near the ground mostly lay speckled eggs. It was once thought that colour was added to the shell while the egg passed through the uterine tract but recent research shows that coloration is an integral part of the development of the shell.

The lovely summer weather has been good for our butterflies especially the marbled whites and gatekeepers rising up in dozens as I walk through the long grass. Some small tortoiseshells paint the scene flitting in the dappled light of the hedgerows. While talking of butterflies I had an email in early June from a resident about a Greater Butterfly Orchid she had seen growing in the Yew Hill Butterfly Reserve. Yew Hill is unimproved grassland and this is the right habitat for this plant. I found it, with its delicate white-with-a-hint-of-green flowers, the only one surrounded by the pink pyramidal orchids growing in profusion.

Has your garden been over-run by snails this summer? My contact at the Conchological Society\* informs me that the mild wet winter followed by the warm wet spring has helped the snails to survive hibernation and breed early which means more breeding and hence more snails! Our chalky soil enables them to get plenty of calcium for shell growth which speeds up the process. That's twice I've mentioned calcium and where would **we** be without it?

Norma Goodwin

\*[www.conchsoc.org/](http://www.conchsoc.org/)

*Ed's. Note: Another lovely article Norma. I'm sure this feature is much enjoyed by all who read it.*



## DATES FOR YOUR DIARY

Below are details of some of the events coming up at Badger Farm Community Centre. For more information, please contact the organiser direct. If you would like to include an event you are holding in this section, remember it does not have to be at the Community Centre, contact the Editor, Jan Dawkins on 01962 868630, email [enquiries@bfobrca.org](mailto:enquiries@bfobrca.org) or visit our website [www.bfobrca.org](http://www.bfobrca.org)

**Monday 25th August** - National Blood Service - 10.00am/2.00pm - Contact 0300 123 23 23

**Tuesday 2nd September** - Dementia Awareness Course run by Everycare - 2.00pm/4.00pm - Contact 01962-842548

**Saturday 4th October** - Auction - Contact 01962-734941

**Sunday 5th October** - Stamp & Postcard Fair - Contact 01795-478175

**Saturday 1st November** - Auction - Contact 01962-734941

**Saturday 15th November** - Winchester Country Market Christmas Fayre - 10.00am/12.30pm - Contact 01962 866340

## BADGER FARM & OLIVER'S BATTERY PARISH COUNCIL MEETINGS

**Badger Farm Parish Council** meet on the 2nd Monday of each month (except August) in the Bushfield Room at Badger Farm Community Centre at 7.30pm. Contact the Clerk Viv Brooks on [viv@bcl-construction.co.uk](mailto:viv@bcl-construction.co.uk) for information.

**Oliver's Battery Parish Council** meet on the 1st Tuesday of each month at St Mark's Church Hall, Oliver's Battery Road South at 7.30pm. Contact the Clerk Elizabeth Billingham on [clerkoliversbattery@gmail.com](mailto:clerkoliversbattery@gmail.com) for information.



Published by Badger Farm & Oliver's Battery Residents' Community Association  
Email ~ [enquiries@bfobrca.org](mailto:enquiries@bfobrca.org) ~ Tel. 01962 868630 ~ [www.bfobrca.org](http://www.bfobrca.org) ~  
Registered Charity No. 279592