



Campaign to Protect Bushfield Camp

What is the BUSHFIELD CAMP development?

As part of the consultation exercise, developers of the proposal failed to engage with BFOBRCA, as both one of the community groups and neighbouring Residents Associations, despite being notified of the Association's position as a stakeholder.

The public consultation exercise, run over 7 months, presented varying representations of the intended development which have led to a lack of clarity and understanding of the proposal, thus reducing people's capacity to contribute meaningfully. This has been reflected in comments on the Protect Bushfield petition and through feedback we have received from the public, as well as derived from our own experience. We and other community groups question what feedback was selected to inform the Concept Masterplan that Cabinet has now endorsed.

Consequently, when the newly introduced Concept Masterplan governance for significant developments was tabled to be approved alongside the first iteration of the implementation of the Bushfield Masterplan, drawn up with consultation between the developers and WCC, we created a petition highlighting the value of the site and the concerns of the public regarding this development.

Despite representations from councillors, residents and community groups, raising a number of concerns, Winchester City Council approved the Bushfield Camp Concept Masterplan, as a material consideration, to any subsequent planning application by the developers, on Wednesday 21 June 2023. This now facilitates the progression of the Concept to planning application for mixed-use development of up to 20 hectares allowing for: Multiple

buildings in excess of 2 (up to 4, storeys), a hotel, retail, cafés and restaurants, entertainment, and multi-storey car parks for 900 cars (only), amongst other things.

Possible access is proposed via a one-way loop road with separate entrance and exit which will extend through undeveloped arable land both onto Badger Farm Road and possibly alongside the southern end of Whiteshute Ridge on the Clarendon Way. As this is one of the many points that have received a lack of clarity in the representations and conflicting answers during the consultation we need the developers to clarify this.



Protect Bushfield Camp

Continued from page 1

Winchester's Council's own Spatial Strategy describes Bushfield as 'UNIQUE' and 'SENSITIVE'. Bushfield borders the South Downs National Park and the River Itchen Special Area of Conservation and Site of Special Scientific Interest. Parts of Bushfield and the adjoining Whiteshute Ridge, are designated **Sites of Importance for Nature Conservation**. **Moreover, Policy WT3 in the current Local Plan requires a comprehensive, conservation-led approach to this sensitive site which sets out criteria for its development. In particular, the effects of development on flooding and the River Itchen, given the topography of the site, must be a major concern.**

For 50 years Bushfield has been naturally 'rewilding', questioning the accuracy of it being described as a derelict, brownfield site. Rather it is regarded as an abundant, vital green space used by the community for recreation.

A local resident commented, 'I recently revisited the area of Whiteshute and Bushfield and was staggered at the beauty of the chalk downland on my doorstep. I now live on Badger Farm but had not been back to this area for about 50 years. I would urge you all to walk around this fantastic area to understand why the whole area should be saved from this and any further development.'



The housing areas of Badger Farm and Oliver's Battery are to the north of Bushfield with Badger Farm Road as the only route providing access (excluding Millers'/Port Lane to Oliver's Battery).

The Masterplan has been designed to attract 2520 FTE (as per the Consultant's technical document submitted with the Bushfield Concept Masterplan) roles plus visiting services and clients and their various means of transport to the area – a figure that would be in excess of the population of Badger Farm (2463 approx.). Again, there has been considerable confusion as to the number of jobs suggested at the consultations.

There are serious concerns with regarding the pressure this proposal will place on our roads, in terms of traffic, parking and congestion, as well as emergency service response; increased pressure to our infrastructure; damage to and increased demand and stress on this unique environment; a substantially changed, and reduced sense of space (walks

and picnics beside office blocks are not to everyone's taste) and the visual impact of this proposal from bordering areas and high points such as St Catherine's Hill; the safety and wellbeing of the local community as a consequence of the



added pressures and loss of an already valued space. Crucially, there appears to have been a lack of sufficient accessible dialogue with the developer with a lack of vital, transparent and consistent information within its consultations to enable a properly informed response. Public Consultation is cited as a key requirement in the Bushfield Master Plan, as approved by the Council on the 21 June 2023, and yet there have been doubts raised about the quality of that consultation.

We are also concerned about the impact of this almost self-contained commercial development will have on the vibrancy of our city – numerous offices appear empty within the city centre already. A very rough calculation of vacant space adds up to at least 162,000 square feet.

Previous site assessments of Bushfield for Winchester City Council have concluded 'the scope for any form of built development is limited'.

We will continue to call on Winchester City Council to not agree any application for outline planning permission until:

- the question of fair and adequate public consultation has been resolved,
- effective and transparent scrutiny has been performed and to make available all evidence and reports submitted in relation to any planning application arising from the Bushfield Masterplan
- all employment reports for Winchester due in terms of the new local plan have been received and assessed by the Council prior to any decision on the application
- account is taken of and responded to our concerns as above, as well as those raised with the developer
- the developers have shared evidence for the sustainability, ecological, biodiversity, socio-economic and social benefit claims and how they were reached, as soon as possible
- thorough consideration of the appropriateness of this development and any future development within the context of Winchester City Council's strategic aims; its climate emergency, as declared by WCC in 2019, and biodiversity policies.

Continues on page 4

ACTIVITIES AT BADGER FARM COMMUNITY CENTRE

HEALTH & WELLNESS

Aucott Karate	Thursday 6.45–9.00pm	Phil Aucott philaucott@gmail.com
Body Control Pilates	Every weekday except Tuesday	Jenny Forster 07929 624526
DDMIX Dance Fitness	Friday 9.30–11.15am	Gemma Feeny aucottschoolofdance@gmail.com
Fitsteps	Saturday 9.30–10.30am	Helen Clarke hello @enjoydancefitness.co.uk
Glenda Davis Tai Chi	Tuesday 1.45–2.45pm	Glenda Davis 07504 533771
Move with Mel	Tuesday 6.30–7.60pm	Melissa 07708 532210
Legs, Bums & Tums	See advert for details	Catherine Jones 07990 513434
Slimming World	Saturday 8.00–10.00am	Suzi Buccheri suzibuccheri@hotmail.com
Line Dancing	Thursday 1.45–3.45pm	Brian Woodford 07511 876149 07761 327488
Weight Watchers	Wednesday 5.15–6.45pm Thursday 9.00–11.00am	Mary Blanchard mary.blanchard@ww.com Lorraine Small lsmall@ww.com
Winchester Tae Kwon-Do	Monday, Wednesday 6.30–8.30pm	Lucy Scott info@winchestertkd.co.uk
Wyeth Yoga	Monday 9.30–11.30am	Christine Wyeth wyethchristine@yahoo.co.uk

OLDER ADULTS

Andover Mind Carer Support	3rd Tuesday of the month 2.00–4.00pm	Judy Beaunier judy.beaunier@andovermind.org.uk
Brendoncare Seated Exercise Club	Thursday 3.00pm–5.00pm	01962 857099 clubs@brendoncare.org.uk
Chat-Tea Café	Last Monday of the month 2.00–4.00pm	info@chat-tea.co.uk
HomeInstead Activity Group	Every 4th Friday 10.30am– 12.30pm	hants@homeinstead.co.uk 01962 736681
Lipreading	Wednesday 2.00–4.00pm	sandydawn3064@gmail.com

GENERAL INTEREST

Badger Farm ACOL Club	Friday 7.00–10.00pm	Hugh Gough mariongough@icloud.com
Badger Farm Art Group	Thursday 1.30–3.30pm	Sarah Zimmer 20robinspeed@msn.com
Friday Afternoon Bridge	Friday afternoon 2pm–5.15pm	Robin Speed mikes1slinn@btinternet.com
Royal British Legion	1st Thursday of the month 8.00–9.00pm	Chris George chrisgeorge199211@gmail.com
Wessex Wargames	Tuesday 7.00–11.00pm	Alan McFarlane 01962 864210
Winchester Chess Club	Wednesday 7.15–10.30pm	John Schonenberger schoneys54@gmail.com

These are some of the regular activities that take place at the Community Centre. For more details see bfobrca.org/activities or contact the group's organiser.

If you can't find what you are looking for or want to enquire about setting up a new group, please email bfobrca.manager@gmail.com or telephone Ali on 01962 868630 (Mon – Wed only).

CHILDREN

AG Martial Arts	Wednesday 5.00–6.15pm	info@agmartialarts.co.uk
Badger Farm Pre-School Playgroup	Mon. Tues. Wed. 9.15am–3.00pm Thurs. Fri. 9.15am–12.15pm	Denise Tosdevine 07771 798 474 deniseinpreschool@hotmail.co.uk
Integr8 Dance	Thursday 5.00pm–6.00pm	01962 808398
Winchester Scouts (7th)	Tuesday 8.00–9.30pm	gsl@7thwinchesterscouts.org.uk
Winchester Junior Chess Club	Sunday 11.00am– 12.30pm	Lukasz Piecha 07711 804361
Winchester Young Embroiderers	Contact organisers for dates	Karen Brooking brooking.karen@gmail.com



Badger Farm Parish Council

BADGER FARM
Parish Council

I hope you are all well and enjoying the fine weather. Hopefully we will not get another hosepipe ban this year.

We have had the promised communication boards installed on both play areas and they have generated a lot of interest.

The Parish Council have taken back responsibility for the five bus stops on the estate and we have employed someone to maintain them and keep them clean. These old bus stops are coming to the end of their life, they are hard to clean and suffering vandalism in the form of graffiti and physical damage. We are considering replacing them over the next few years with more suitable modern shelters. These would be easier to maintain and more resilient and safer for residents with improved sight lines.

I mentioned in my last article that the Bushfield Camp development had raised its ugly head. The matter has now gained some momentum and there have been several consultation meetings. The Parish Council arranged a meeting to give residents a chance to give us their opinions but unfortunately the developers pulled out at the last minute. We went ahead without the developers' input and we had a lively meeting giving everyone the chance to air their thoughts. We noted all the comments and they are

Website

badgerfarm-pc.gov.uk

Social Media

facebook.com/badgerfarmpc
twitter.com/badgerfarmpc

available on our website. Following WCC's Cabinet approval of the Master Plan for Bushfield Camp and prior to application for outline planning permission, the Parish are taking professional advice on how to proceed and protect our environment and infrastructure. All updates will be published on our website and notice boards.

On a happier note, to mark the coronation of King Charles III we are going to plant a copper beech tree at the junction of Ridgeway and Meadow Way.

The estate maintenance is still problematic this year with many areas missing their regular cuts. We are informing WCC about missed cuts but would encourage residents to also report them via the My Winchester app or online. Unfortunately, some residents are fly tipping their garden waste on communal areas and at the bottom of Whiteshute Ridge. This is not only anti-social it is also illegal and can also be reported on the Winchester app.

Hopefully, our new website will be up and running soon and we would still like to hear from residents on any content they would like to see.

As usual we would like to hear from residents about any estate issues and welcome you at our monthly meeting (see website for details).

Clr John Godbold,
Chair, Badger Farm Parish Council



Clerk Email

clerk@badgerfarm-pc.gov.uk

Clerk Phone

01425 656010
07463 760801

Protect Bushfield Camp

Continued from page 2

Finally, we ask WCC to stick by its stated aspirations:

'To strive to be an exemplar in the management of our own estate, helping to ensure others do the same'

'This loss to biodiversity has continued within the last decade due to agricultural management, inappropriate development.... The City Council has an important role to play in helping to reverse the loss at a local level.'

Winchester City Council Biodiversity Action Plan 2021.



What can you do?

Whilst a planning application is being drawn up, what can you do to help protect Bushfield?

- Email your concerns about the Bushfield proposal to Winchester City Council's portfolio leader at jporter@winchester.gov.uk
- Like and follow our Facebook campaign page for updates and ways you can help (facebook.com/ProtectBushfield)
- Can you volunteer to support our campaign? Email us at enquiries@bfobrca.org
- Keep sharing the petition (change.org/ProtectBushfield)
- Raise awareness by talking about your concerns
- Have you spotted wildlife while out walking? Find out about how biodiversity is recorded here hants.gov.uk/landplanningandenvironment/environment/biodiversity/informationcentre/speciesrecording
- Attend any meetings discussing the Bushfield Camp proposals.

Trustees of the Badger Farm & Oliver's Battery Residents' Community Association



Beautiful white heleborine orchid spotted at Bushfield.

Sign our petition

Website

bfobrca.org

Social Media

[Facebook @BadgerFarmCommunityCentre](https://facebook.com/BadgerFarmCommunityCentre) | [Twitter @BFCCWinchester](https://twitter.com/BFCCWinchester)

Email

enquiries@bfobrca.org

Phone

01962 868630



Oliver's Battery Parish Council

Oliver's Battery Events

The Easter Egg Hunt in April and the 'Big Lunch' Coronation Event in May were both great successes. See the article on EEH23 and photographs of 'Big Lunch' in the PC Community Newsletter June 2023.

Scarecrows next ... The 4th Annual Scarecrow Competition will be held between Saturday 29 September and Sunday 8 October. There will again be three Judging Classes (with trophies) – Junior, Open and Group. Followed later in the year by ... The 5th Annual Christmas Tree Event on Saturday 2 December. The tree will be put up in the morning and there will be an evening event as usual. Christmas 2023 needs a tree! If you can donate one, please contact the Events Group via oliversbatteryevents@gmail.com. More details and publicity on both nearer the time.

Asset of Community Value (ACV)

Cllr Connie Leach is pulling together the supporting evidence for re-nominating Texas Field and Yew Hill Butterfly Reserve as an ACV. The evidence bundle will consist of:

- Photographs showing the land and people using the land to further their social wellbeing and social interests. A 'snapshot' of who goes there, what they do and the value of the land.
- Analysis from Survey on SHELAA sites in and around Oliver's Battery.
- Analysis from independent Survey from local residents. Stand-alone 'Snapshot' evidence of use.
- Analysis of Residents' Survey emailed to over 100 people on PC contacts list. Noting recent, current and future use of the land.

- Transcriptions from Residents' email testimonials responding to the request in March PC Community Newsletter to all households in Oliver's Battery – what the land means to them, how they use it, its value to community, etc.
- Extract from First Tier Tribunal Judgement, dismissing Landowner's Appeal. It was decided that community use is an actual current use that is not ancillary to agricultural use and concluded that it is realistic to think that the local community's use of the Land may continue for some time.
- Completed Application Form for Re-Nomination.

It is encouraging that the survey responses, statements and photographs were received from new and long-term residents. Thanks to everyone who has contributed.

PC Community Newsletter

The new look Oliver's Battery PC Community Newsletter was published in June. Although the paper copies are in black and white, there is a colour copy on the PC website at oliversbattery.info/news-and-updates/newsletter.

Recreation Ground

Following the annual play inspection report, prices are being obtained from specialist contractors for some remedial/improvement works, including a replacement basketball hoop and backboard.

The future of Bushfield Camp

At the PC meeting on 6 June, Nikki Davies (Managing Director, Meeting Place) and Mark Lapsa (Gisborne Developments) provided a short presentation about the proposed development. See PC Community Newsletter June 2023 for more details.

David Kirkby – Chair
[oliversbattery.info](mailto:cllr.kirkby@oliversbattery.info)

Oliver's Battery Events and Group Activities for your Diary

Oliver's Battery Parish Council meetings – 7:30pm – St Mark's

Tuesdays: (no meeting in August), 5 September, 3 October, 7 November, 5 December

Oliver's Battery Community Events

Scarecrow Competition – Various locations throughout Oliver's Battery

Between Saturday 29 September and Sunday 8 October

Christmas Tree Event – The Battery (next to St Mark's)

Saturday 2 December evening

Oliver's Battery Community Films – 7pm for 7:30pm – St Mark's

Saturday 5 August (matinee 1:30 for 2pm) – *A Man Called Otto*

Wednesday 16 August – *Matilda (The Musical)*

Wednesday 20 September – *TBC*

Wednesday 18 October – *TBC*

Wednesday 15 November – *TBC*

Re.vive Community Café – St Mark's

Fridays: 9am – 12 noon

Oliver's Battery WI – 7pm for 7:30pm – St Mark's

No meeting in August

Monday 18 September – Speaker meeting on Bats

Monday 16 October – Activity meeting - Ros goes Dotty (Stone painting)

Monday 20 November – Speaker meeting with Rev. Marianne Foster

Monday 18 December – Christmas gathering with seasonal quizzes and entertainment from Winchester Acappella

Battery Club – 2.30-4pm – St Mark's

No meeting in August

Wednesday 13 September – 19th Birthday Meeting Talk - 'Ooh Never Noticed that Before'

Wednesday 11 October – Beetle Drive

Wednesday 8 November – Flower Arranging for Christmas

Wednesday 8 December – Christmas Lunch

Oliver's Battery Social Evenings – 6-8pm – South Winchester Golf Club

Thursdays: 14 September, 12 October, 9 November

Andrew Harris Electrical Services

ALL DOMESTIC WORK UNDERTAKEN INCLUDING:

- REWIRING
- FUSEBOARD REPLACEMENT
- ADDITIONAL LIGHTS AND SOCKETS
- WIRING FOR TELEPHONE AND COMMS SOCKETS
- INSTALLATION OF LIGHT FITTINGS
- GARDEN LIGHTING AND POWER

ALL ASPECTS OF TESTING INCLUDING:

- ELECTRICAL INSTALLATION CONDITION REPORTS
- P.A.T. TESTING OF APPLIANCES

COMMERCIAL INSTALLATIONS

RETAIL INSTALLATIONS

ALL WORK UNDERTAKEN IN A CLEAN, TIDY
AND PROFESSIONAL MANNER

FREE ESTIMATES AND ADVICE

63 May Tree Close, Badger Farm, Winchester, SO22 4JF

Telephone: 01962 856805 ~ Mobile: 07956 934 195

Email: andy@adhelectrical.com



Computer, Mac or Tablet Problems?



Home Visits
PC, Laptop, Pads, iPhones
Systems / Software / Tools
Fix Windows 7/8/10, Mac OS
Virus cleans, Security
Tune Ups, Health Checks
Broadband & Data / Printer
Sharing
Upgrades & Hardware
Cracked Screens
Data Recovery
Impartial Advice

Laptops, PCs, Macs, iPads Phones

C&S Computers

Call Colin Nicholson :

01962 713890

Mob:

07727 481220

Qualified engineer

10% discount on labour with Magazine if over ½ hour



Little Fishes Pre-School



Based at St. Peter's Catholic Primary School, Oliver's Battery
Road North, Winchester, SO22 4JB

www.stpetershants.co.uk

"At Little Fishes we have fun every day as we explore and discover through our play. We always remember to have sharing hands, speak with kind words and use our listening ears"

For 20 years, Little Fishes has offered a warm, secure and welcoming environment for pre-school children to learn and explore.

We are based in a large and sunny purpose-built room and have an extensive outside play area, which we share with the school Reception classes and which we use every day whatever the weather. The Little Fishes team works alongside the school's Early Years teachers to provide the EYFS curriculum.

Open Monday to Friday during term time, with a variety of sessions available between 08.45 & 15.45, for children aged between 2 years 9 months and 5 years.



No registration fee
£5.50 per hour for non-funded sessions, inclusive of
snacks and consumables
Universal and Extended EYE funding available for 3 & 4 year olds



If you would like to arrange a visit or find out more information,
email admin@st-peters.hants.sch.uk or call 01962 852820



Hampshire County Council

I hope this update finds you well as we enter the summer season. As your County Councillor, I am pleased to share some important news and initiatives happening in our community.

Rural Verge Cutting Hampshire Highways has commenced its seasonal grass-cutting programme. Our team is mindful of ecologically important times and sensitive sites, avoiding unnecessary grass cutting. However, for safety reasons, certain locations require mowing to maintain visibility, such as approaches to roundabouts and junctions. For more details, please visit bit.ly/HCC-grass.

Cost of Living Support Recognising the financial challenges faced by local households regarding food and energy prices, HCC has announced plans for an additional £14.2 million of funding. Together with local organisations, we are dedicated to assisting with food, energy, water bills, and essential household items. Find detailed information on how to seek support at bit.ly/HCC-C4C.

Bus Service Investment To support local bus services, HCC has allocated an additional £3.5 million in investment, including for services in the Winchester area. I am pleased to report that our government has extended the £2 bus fare cap until October 2023, rising to £2.50 until November 2024. Let's make the most of our local services and contribute to a sustainable transportation network.

Help with School Transport Some children face exceptional circumstances that prevent them from reaching school. Hampshire County Council may be able to offer



Winchester City Council

Making your local council more open, helpful and accountable

As local councillors, one of our most important roles is to help you navigate the world of local services and find solutions for everyday issues like maintenance of green spaces or waste collection. Local government can be complex, and as ward representatives we can help cut through the noise.

Having said that, the good news is that local services are getting more open, accessible and transparent thanks to our connected modern world. There are now more ways to follow what's going on, get problems reported and even participate for yourself in the decisions that affect your daily life.

A great example is the Your Winchester smartphone app, which places so many everyday services and problem-solving tools in the palm of your hand. Missed a bin collection? The app lets you report it without hunting for phone numbers. Need to pay a bill? That's there too. Reporting maintenance issues with hedges or verges – that's all available from the Maintenance button.

Not everyone is comfortable using apps, so it's important to realise that all the old ways of reaching the council are still there. Your Winchester adds a convenient one-stop shop that complements these. Even as city councillors, we report things via the app as it's quicker and more convenient for us too. If you don't have the app yet, do give it a look – just

assistance. For further information please visit hants.gov.uk/educationandlearning/schooltransport.

Fostering We have witnessed an increasing number of vulnerable, unaccompanied asylum-seeking children in need of a home. As part of our duty, the County Council is committed to bringing these children into our care through the national transfer scheme. If you would like more information on fostering unaccompanied asylum-seeking children, please visit the Fostering Hampshire Children website at hants.gov.uk/uasc.

Budget Consultation We value your input in shaping important decisions regarding future spending on local services in Hampshire. Our budget consultation is currently underway and runs until 23 July. As we face a budget shortfall of £132 million by April 2025, your participation is crucial. To take part, please visit hants.gov.uk/budgetconsultation and share your views online.

Greening Campaign In collaboration with the National Lottery, Hampshire County Council is pleased to announce nearly £0.5 million funding for the Greening Campaign. The campaign aims to enhance energy efficiency, reduce CO₂ emissions, minimize waste, promote reuse and repair, encourage sustainability through locally grown produce, and create green spaces for thriving wildlife.

As always, I am here to listen to your concerns and ideas. Feel free to reach out to me at Jan.warwick@hants.gov.uk or call me at 07717 104236. Thank you for your ongoing support and engagement.

Cllr Jan Warwick, Hampshire County Councillor

search for 'Your Winchester' or 'Winchester City Council' on your phone's app store.

We'd also recommend giving Winchester City Council a follow on your favourite social media as it's a great way to find out what's happening in the city and discovering new services and sources of help. This past month, WCC's Facebook and Instagram accounts have shared details of new community grants, help available for private tenants, details of free Park Yoga classes and so much more.

fb.com/WinchesterCity

instagram.com/winchestercitycouncil

twitter.com/WinchesterCity

YouTube hosts live streams and recordings of council meetings on youtube.com/@Winchester_City, so you can see exactly how policy decisions are made. Meanwhile, the council website (winchester.gov.uk) provides meeting minutes, agendas, Council Officers' reports, and a plethora of other resources so you really get informed and get engaged. Sure, most people will see all this as being a bit like a good sausage – you'd happily enjoy the end result, but not really want to know how it's made! The point is that more transparency is always positive and we've never had so many ways to be more open or accessible.

Of course, even as more tools become available you can still always reach out to your local ward councillors – Brian Laming, Jan Warwick and Adrian Brophy – who remain on hand to help.

Cllr Jan Warwick

jwarwick@winchester.gov.uk | 07717 104236

Cllr Adrian Brophy

abrophy@winchester.gov.uk | 07590 572405

Cllr Brian Laming

blaming@winchester.gov.uk | 07973 265028

From your MP

First of all, thank you to all those who've written since I announced I would not be standing again in Winchester at the next election. I suspect this Parliament has some way to go yet – so much still to do both here and in Westminster – but thanks for the kindness.

Residents will have heard a great deal lately about the NHS as it marks 75 years. We've honoured that locally by securing £40m of capital investment to develop an elective hub and orthopaedic outpatient facility at the Royal Hampshire County Hospital in Winchester. It will provide more capacity and allow more operations to take place therefore improving access to elective, planned surgery such as hip and knee replacements. At the same time our Trust is also developing proposals to build a new outpatient facility, also in Winchester, specifically for orthopaedics. Scheduled to open in early 2025, this is part of the ongoing investment into services in the city. Winchester is heard in the corridors of power because that's my job.

Secondly, Owen Carey was just 18 when he suffered a fatal anaphylactic reaction after eating a chicken burger, which was stated on the menu as being plain grilled, at a restaurant in London. Owen's sister, Emma Kocher, lives in Winchester and I am working with them to secure a change in the law to prevent other families suffering their agony. We recently met with the Food Minister at DEFRA as part of that.

They've created 'Owens Law' which calls for legal change to put more appropriate and accurate information about the allergens in food on menus, changes in the regulations around proactive discussions with customers about allergies as well as changes in guidance and industry practice for the

restaurant sector. The campaign also wants to see greater research into the causes of allergies and proper recording of, and a national register for, anaphylaxis deaths. You can help us by visiting owens-law.co.uk.

Finally, it was such a pleasure to attend the National Parliamentary Prayer Breakfast recently in Westminster Hall and to welcome church leaders from our community to be there. That included Marianne Foster – curate at St Luke's with St Mark's which obviously serves the communities of Stanmore, Badger Farm, Oliver's Battery, and Winchester Village.

There's so much more on my work across Westminster and the constituency on a wide range of issues, on my website but also on my socials which are a great way to stay in touch fb.com/SteveBrineMP.

Have a great Summer and look out for me on my Summer Tour which will be running as usual in the constituency.

Steve Brine, MP, Working hard for Winchester



Steve with local church leaders at the National Parliamentary Prayer Breakfast

Repair Café Winchester



Grand Opening of the Repair Café

It was a delightful day at the Repair Café Grand Opening last Saturday, July 8th! We were thrilled to have the esteemed Mayor Cllr Angela Clear grace us with her presence for the formal opening at Badger Farm Community Centre. As our Advisors warmly welcomed her, she had the chance to talk to our repairers, mingle with other volunteers, and even enjoy a cup of coffee while learning a few new skills from one of our volunteer demonstrators.

We couldn't help but notice how much fun she had with us, including indulging in some delicious Wild Flapjacks! She was even excited to book a repair for herself in the near future and promised to come back for more.

As 12.30pm approached, our repairers packed up and headed to Unit 12, Winnall for a cosier event from 2-4pm. We had a blast sharing cake, unique skills, and a lively atmosphere with our visitors.

We are proud to say that with our eight events, we were able to prevent 156kg of waste and 1341kg of CO2 emissions – and that's not even counting the event on the 8th!

We hold our monthly events on the 2nd Saturday of each month at Badger Farm Community Centre from 10am–12.30pm and at Unit 12, Winnall from 2pm–4pm. If you fancy visiting us, be sure to check our website at repaircafewinchester.org two weeks before our monthly events to book your items in online for either location. Additionally, you can subscribe to our website to stay up-to-date with all our news or catch up with us on Instagram at [repaircafewinchester](https://www.instagram.com/repaircafewinchester) and Facebook [Repair Cafe Winchester Facebook](https://www.facebook.com/RepairCafeWinchester).

Ali Cochran | [Repair Café Winchester](http://RepairCafeWinchester.org) | info@repaircafewinchester.org



Badger Farm Pre-school Playgroup

Our busy summer term has seen us celebrating the King's Coronation where we all dressed up and took up residence in Buckingham Palace. We had a great tea party with the children – red, white and blue.

We had an interesting week looking at science, where we discovered floating and sinking, slime, volcanoes, magnetic forces and musical glasses. Great fun was had by all!

Our annual summer outing was a huge success with all children having fun climbing, jumping and exploring – a train ride, ice creams and the trip on the coach completed a fun-packed day.

Mr Badger is now visiting the children that will be leaving us for school. By the time this goes to print we will have said our sad farewells to the children and their families.

We look forward to welcoming our new children and families in September. We have availability and would love to see you so do please drop in!

Contact Denise at badgerfampreschool.co.uk, visit our Facebook page ([Badger Farm Preschool](#)) or phone 07771 798474.

Denise Tosdevine, Pre-school Manager
badgerfampreschool.co.uk



OFSTED inspected in March 2018 with very pleasing results

For children from 2 years to school age.
Limited spaces available for 2 – 3 years.

OPENING TIMES (flexible)

Monday – Tuesday – Wednesday ~ 9.15 – 3.00
Thursday – Friday ~ 9.15 – 12.15

Spaces are now available!

All children are funded from the term after their 3rd Birthday.

Funding available for 2 year olds if applicable.

Ideally situated in the Community Centre next to Sainsbury's with a sports hall for physical play and an all-weather outside area with a variety of play equipment.

Our staff are highly experienced and qualified and we ensure a high ratio of 1:6 for 3 and 4 year olds and 1:4 for under 3 year olds enabling plenty of individual time and attention.

"Staff are qualified, experienced and knowledgeable about how children learn. They provide children with a good range of activities to engage and motivate them. Children are kind and caring towards one another and behave well. Staff are positive role models and this helps to create a relaxed and homely environment where children settle happily. Ofsted 2018"

The playgroup operates an open door policy so please feel free to call in at any time and see us in action or call the playgroup supervisor Mrs Denise Tosdevine on 07771 798 474 out of playgroup hours. You can also see us in action and get more information on our website badgerfampreschool.co.uk

Whiteshute Ridge Update: Summer 2023

Five years on since Winchester City Council took management of this important open space, the species-rich chalk grassland is looking fantastic and full of wildlife. The grazing management is working wonders and three of Hampshire and Isle of Wight Wildlife Trust's British White cattle can be expected back on site in November.



Vegetation Survey

A baseline survey was carried out by Belinda Wheeler in 2017. The grassland was found to be reasonably diverse with 79 species recorded including 16 positive indicator species, although at least half of these were limited to just a few individuals. Since 2017, the recommendations in this report, chiefly the introduction of cattle grazing, have been followed to promote the establishment of more wildflower species. Cattle create poached and trampled areas of land which adds variety to grassland swards. Taking the cattle off in the summer months allows flowers to grow and set seed.

In 2022, a repeat survey was undertaken and a similar diversity of 82 species with the same 16 positive indicator species being recorded. Nonetheless, a positive change has been observed, with a 189% increase in the finer, more species-rich grassland type (MG5). There was also an increase

Get on your bike

Despite living in 'Winchester', many Badger Farm residents rarely visit other parts of the city. One of the cited reasons is that it is quite challenging for us to get there – particularly by car. Walking and using the bus are options but take longer and can be expensive (return bus fare is £3.60).

For many trips it will be quicker, more convenient, and cheaper by bike than the alternatives. As a bonus you'll get some exercise, even if you use an e-bike. You can be in town in 10 minutes with your bike secured and ready to go about your business. Admittedly the return route is uphill and so will take a bit longer unless you have an e-bike.

Cycle Winchester has published a list of practical routes from Badger Farm into and across Winchester. You will also find advice on bike parking and security on the Cycle Winchester website (cyclewinchester.org.uk).

For cyclists, Badger Farm is probably the best connected suburb in Winchester with routes that are mainly on quiet back roads. The link from Badger Farm to Stanmore Lane and also College Street helps make these routes very attractive. However, short sections – such as 100m of St Cross Road – are busier and so will need caution. The one-way system is most unhelpful for cyclists so one of the routes includes a short walk.

Check out the details of all seven routes by clicking the [Check out the routes with RideWithGPS](#) button on

in the frequency of some positive indicator species such as agrimony, lady's bedstraw, common bird's-foot-trefoil, black knapweed, glaucous sedge, rough hawkbit and meadow vetchling. Changes in grassland condition and species diversity is a gradual process, but these results indicate that the grazing management is having a positive impact.

Wildlife Surveys

Reptile surveys have been carried out each summer since 2019. We've continued to record good numbers of common lizards and slow worms with our

first record of grass snake in 2022. The Hampshire and Isle of White Amphibian and Reptile Group (HIWARG) is kindly undertaking the reptile surveys for us this year and excitingly they have recorded an adder! This means we are lucky enough to have all four species of common reptile.

The meadow is teeming with invertebrate life including common blue and marbled white butterflies, dark bush-crickets and common green grasshoppers.

Oliver's Battery Countryside Group have been undertaking glow worm surveys. These special invertebrates are often seen glowing throughout June and July. Across three visits in 2022, a remarkable 33 females were recorded.

[Zoe Keeble, Ecologist/Biodiversity Officer
WCC Natural Environment and Recreation Team
NaturalEnvironment@winchester.gov.uk](#)



cyclewinchester.org.uk/updates/local-routes-within-winchester-badger-farm.

So get on your bike and pop into Winchester in 10 minutes. Then grab a coffee or visit the market, bakeries, and independent shops that await you.

Cycle Winchester | A local community action group campaigning to make Winchester 'better by bike'

News from the Community Centre

A tribute to Loraine Martin, former BFOBRCA Trustee

Many readers of all ages will be saddened to hear that Miss Loraine Martin passed away after a short illness at Abbotts Barton Care Home in Winchester on 15 June 2023 aged 89.

After a very long and successful teaching career which took her to many parts of the world, Loraine made her home in what was then the newly built Badger Farm.

Loraine quickly made good use of her retirement by joining several local community organisations and very generously gave her time to be an active and loyal supporter of them all. She joined the Winchester RSPB and was a regular attendee at their meetings; at the same time she joined the Hampshire & IOW Wildlife Trust reflecting her lifelong love of the natural world. For the latter organisation she soon became a committee member of the local Winchester group of volunteers and remained so until recently. Here she took on many roles including organising a very full programme of walks and talks as well as regular collections such as at Badger Farm Sainsbury's, which raised considerable funds for the work of the Trust, and for a time took on the position of Chair of the committee.

Loraine continued her botanical expertise in a voluntary role as a member of Hampshire Flora Group, undertaking several plant surveys over the years around Winchester, contributing to the hugely important Plant Atlas 2020 which maps changes in the distribution of British and Irish flora. It was Loraine's very thorough research that helped Winchester City

Council take back Whiteshute Ridge to rebuild its biodiversity back to the level it was at 25 years ago.

Loraine continued her love of travelling and enjoyed many wildlife holidays all over the world as well as holidays with her Graduates of Exeter University group which she remained in touch with all her life. She shared her photographs from her vast collection not only with her many friends, but also in the many very informative and entertaining talks raising money for the Wildlife Trust and other organisations.

Loraine took a great interest in her local community and, always keen to help wherever she could, became a trustee for the newly formed BFOBRCA for many years. She was a regular hospital visitor at the Royal County Hospital in Winchester where her cheerfulness and general interests were put to good use on the wards. As a devoted member of the WI, Loraine actively participated in their many community-based events and earned the respect and admiration of all who knew her.

Throughout her life Loraine retained her love of teaching children and she gave her time for many years to regularly listen to and encourage young readers at Stanmore Primary School, volunteering with the local Brownies and then in later years sharing stories and playing games with the children at Badger Farm Pre-School, much to their enjoyment.

A remarkable lady and member of the local community. She will be greatly missed.

Anne Ardill,

Winchester Local Area Volunteers HIWWT
On behalf of the Trustees of the Badger Farm & Oliver's Battery Residents' Community Association

Website

bfobrca.org

Social Media

Facebook @BadgerFarmCommunityCentre | Twitter @BFCCWinchester

Email

enquiries@bfobrca.org

Phone

01962 868630

Weather or Climate? Let's chat.....

We love to talk about the weather in this country. It was a 'safe' conversation starter as the weather used to vary from day to day. We are not used to the constant heat and persistent lack of rain we have had recently. Perhaps we need to start talking about climate rather than weather?

The weather patterns we grew up with have changed. Where is that variable month of May when plants grew so well? May used to be cool and damp one moment, then sunny the next. Days in June were always warmer but not this hot, day after day! It was very hot last summer too. To make things even more confusing, recently springs have been colder. This is a problem for gardeners and farmers, let alone wildlife. (Our rain-fed garden pond almost dried out in June until the heavy rain fell at the start of July. I just hope that the wild creatures living there have survived. There will not be many dragonflies in our garden this year.)



So, our weather has become unpredictable. Farmers and gardeners cannot rely on rain and warmth at the right time to grow crops and wildlife suffers too. Yes, climate change is very concerning. So many of us think that our natural environment is very important. Quite a few of us think that our government should be dealing with the problems of climate change more effectively – we need system change.

Meanwhile, we cannot reduce the impact of climate change individually, but we can talk about it. Let's start talking about climate rather than weather. Many parishes in the rural areas of Winchester District have started holding 'Climate Cafés' where they pass on tips to each other about how to live more sustainably. We

now have a Repair Café at Badger Farm Community Centre. **Would you like a regular 'Climate Café' where we could chat and share ideas about low carbon living?** Tell the editor (bfobrca.cnews@gmail.com)!

Clare Shorter

VHN DECORATING

Female Decorator

Interior / Exterior
Painting & Decorating
Services

Free no obligation quotes
Competitive prices
Domestic & commercial
OAP discount
Fully insured
Large and small jobs considered



Vicky Nash
07966 919 965

vhndecorating@hotmail.co.uk

Oliver's Battery
Winchester



Look and Feel Beautiful,
Book an Appointment Today!



theresa harrison

Facials
Wellness Therapies
Massages
Intense Pulsed Light
Waxing
Manicure & Pedicure
Eyes & Ears
And More...



thBeauty Therapy

3 Treble Close, Olivers Battery,
Winchester, SO22 4JN

07940 850713

theresa@thbeautytherapy.com

www.thbeautytherapy.com



MEDITATION WINCHESTER

LEARN TO MEDITATE

Find Your

INNER SANCTUARY OF STILLNESS



*With
Charlotte*

Self Love Coach
Introduction Courses
Retreat Days
Drum & Sound Baths
Cacao Ceremonies
One to One
Family
Workplace

Qualified Meditation Teacher
DIPLOMA BSoM

07736905302
letitgomeditation.co.uk
letitgouk@gmail.com



Alexander GARDEN SERVICES Winchester



- Local professional specialising in -
Landscaping - Fencing - Artificial Grass
Driveways - Decking - Paths & Patios
Water Features - Garden Design

- Fully Insured - Established 2008 -

If you are looking for someone to take on those larger garden jobs such as replacing fences, laying paths and patios, give the garden a makeover or a full re-design, then look no further... we offer a range of services designed to take the strain out of gardening so you can fully enjoy your garden all year round.

Call today and expect that little extra...

01962 717735 • 07971 529217

www.alexandergardenservices.co.uk

Wildlife Gardening

Last time I wrote that, like many garden-dabblers, I was excited for a great year and bursting wildlife all over the garden. Oh folly! I have entered the phase where there are decisions to take and challenges to face. When I set out, I wanted to see how much wildlife I could encourage in the garden and to live in the good of having a garden full of native plants, pollinators and creatures. That has been the guiding principle for the decisions.

I was excited about the amount of frogspawn we had. I was convinced that we would have tadpoles and then froglets all over the pond and then – frost, lots of deep frost. It seemed every last bit of frogspawn was killed by the frost. I researched, wondering if there was something wrong with the pond. I was reassured by experts that the freezing conditions had done for the spawn, that a few tadpoles would have survived and the frogs would breed again next year. If I am honest, it was only modest consolation and I was really disappointed.

Another pond problem arose from heat. In the recent hot spell, the pond water levels dropped enormously. We thought that the lining material might have been damaged but checks suggested not. It seems that the high heat

caused far more evaporation than normal and that the plants in the pond were drawing more heavily on the water for their health. These combined caused the drop in the water level. This presents a dilemma. Do you allow the level to drop and wait for rain, taking the risk that you might lose plants and/or creatures? Or do you attempt to re-fill the pond with all the concerns about water supply and the dangers of tap water to a delicate eco-system?

I have also had to make some choices about the plants that have self-seeded. These have grown where I had been encouraging another pollinator or where they made a pathway unsafe. I don't care for pulling a plant out when it could be useful but I am no use to the garden if I fall and break something.

Finally, we acquired 'unwelcome wildlife' of the rodent variety. The only creature that really sends a shiver down my spine. There was a very difficult decision to make.

It has been a more difficult season than I had expected but we are awash with fruit because the pollinators have been so busy, there are more butterflies than I have seen in previous years and the hedgehogs are still visiting. The joys outweigh the challenges.

If anyone knows how and when to change the pond liner – just in case...

Peter Roberts

theWI Oliver's Battery WI

INSPIRING WOMEN

Ladies, if you are wanting to meet people in the area, find like-minded individuals who enjoy learning, and the chance of a chat over a cuppa, why not consider attending a WI meeting?

Oliver's Battery WI is one of several groups in the Winchester area. We meet again in September, on the third Monday of the month, at St Mark's Church Hall. Doors open from 7.15pm for a 7.30pm start. We offer a varied speaker or activity programme in addition to our monthly Craft, Bookclub, 5k walks and Knit & Natter sessions. These are run by and for members and are open to all abilities.

September will be a busy month for us as we prepare for participating in the Romsey Show, gather a team of Marshals for the Winchester Half Marathon, get creative with our own scarecrow entry and all this before our monthly meeting learning more about Bats. The crazy theme continues into October when we'll be going Dotty with Ros as we learn how to paint stones! In November we'll be welcoming our local vicar Rev'd Marianne Foster as our speaker. December will be more social with seasonal fare, quizzes and musical input from the Winchester A Capella singers.



An apology

We have recently received feedback on the Natural Spaces article in the Spring 2023 edition of Community News. Concern was expressed that the owner of the property that was shown in the Before and After photographs may not have been happy for these to be used in this context.

As a community-run newspaper, we strive to produce quality content while maintaining the highest standards. We sometimes fall short and make errors. Our intention, and that of our contributor, was not malicious but we will ensure that we exercise greater caution in the future.

We would like to take this opportunity to wholeheartedly apologise for any offence that we have caused.

Ann Jury
Community News Editor

On behalf of the Trustees of the Badger Farm
and Oliver's Battery Residents' Association

Oliver's Battery Primary and Nursery School

Year 6 It is coming to that time of year where we prepare to say goodbye to another group of students and send them off on their adventures to secondary school. Year 6 is such a special year for children and this year has been no exception. Our children have thrived and embraced all the challenges and opportunities they have been given this year. They have represented the school so well from sporting competitions at Kings', to maths challenges at St Swithun's, to showing sheer determination and resilience in tackling their SATs tests. We are really excited to watch their performance of 'I'm a 11-year-old get me out of here' – there are lots of budding singers and actors! And to celebrate their success with their parents in our traditional Leavers' Assembly. We'd like to say a big well done to all the Oliver's Battery's Year 6s – we are incredibly proud of each one of you and wish you lots of luck for Secondary School!

50th Birthday It is the school's 50th anniversary in September. We have had great fun looking through the archives at photos through the years and reading the diary that was written by the first headteacher when the school was opened. The school community is working hard to organise a big celebration on Saturday 18 September. We welcome any previous teachers or students to come and join us and celebrate the success of the school over the years. Look out for further information!

Hat Fair It was great to welcome the playmakers into school to deliver dance workshops to children in Year 4 and 6. The

children shared their 'guilty pleasure' song and enjoyed dancing. We were also lucky enough to have a DJ for lunch-time and at the end of the day. I'm not sure who enjoyed it more – the children or the teachers! It was such a great atmosphere and a fantastic way to end a Friday at school.

Street Pastors We have also welcomed the Street Pastors into school this term to deliver an assembly to our pupils. They were introducing themselves to our school community and talking about their new role as School Pastors. They will be patrolling areas between Stanmore Primary School, St Peter's and Kings' to ensure that children feel safe and have someone to talk to in the community if they feel worried. All of our children were very excited to meet them and asked lots of questions. We are very thankful that they are giving up their time to support us.

Nursery Class We do have some spaces for Autumn term due to 16 children moving up to school. Our Nursery Class is very popular – our Hampshire inspector even said that he would have loved to send his children there when they were young! For more information on curriculum, staff and Forest School opportunities please visit our website.

For details of all the latest happenings at school, visit our website: oliversbatteryprimary.com. And if you would like to visit the school, please call 01962 869496 to make an appointment. Our Head teacher, Mrs Redfern, would be delighted to show you around.



Oliver's Battery Brownies

Well what a packed term we have had! We started with the Coronation celebrations – the girls sewed a guardsman as a keepsake and Oliver's Battery Parish Council were kind enough to gift each child a special coronation coin. We then learnt about the properties of bubbles and the importance of clear communication. Most of the unit went to Injoy Southampton for an exciting day of trampolining and climbing with girls from across Hampshire West. It was a very early start to get the coach.

The second half of the term Sparrowhawk had us out on The Battery making simple maps and we practised our money maths with Snowy Owl. Brown Owl taught us how to get help in an emergency and we achieved our First Aid skills builder.

Natalie and Megan came to visit us from The Priory Hair Lounge. The girls really enjoyed the session learning how to plait and style hair. Brown Owl went home looking slightly different to when she arrived! The girls didn't think she'd walk home like that! The hairdressing dolls were so realistic to touch and some even had real hair.

In late June, we spent a lovely time in Winchester completing the Girlguiding Winchester city trail. There were so many other packs out and about that week – maybe you spotted some of us enjoying the sunshine?

Due to the torrential rain our pond-dipping excursion to John Keble School pond had to be put on hold. Instead we

made mixed-up minibeasts and used the magnetic rods to 'pond dip' for pondlife we had drawn. We even played a game to learn about ladybird invasions. Maybe next time the weather will be kinder?

We currently have girls attending six different schools so it's a great place to make new friends. There are spaces available and would be lovely to see some new faces. Please do get in touch if you think you would like to try a meeting.

Please visit girlguiding.org.uk/get-involved if you'd like to register a potential Brownie or volunteer to help us run the sessions. Dalma is unfortunately leaving us as she is moving away from Winchester. Thank you for your enthusiasm and we wish you all the best for your new start.

Kate Fletcher, and all at Oliver's Battery Brownies
3rdwincitybrownies@gmail.com



Legs, Bums and Tums

Legs, Bums & Tums

runs every Monday 9.30–10.30am at IBM Sports Hall and Tuesday 6.45–7.45pm at Stanmore Primary School Hall. Both of these classes will return to Badger Farm Community Centre when we are able to use the Battery again. The Tuesday evening class is run on a rota basis to ensure everyone has enough room.

Seniors Exercise Classes

run every Wednesday 11am–12pm in person (9.15–10.15am ONLINE option) at Badger Farm Community Centre in the Bushfield room. These classes comprise of a thorough warm up routine and then move onto cardio, strength, conditioning, balance and chair/mat work all with a view to working at your own pace. The classes run on a 5 week basis.

Bootcamps

are also running every Sunday 9.30–10.30am (online), Wednesday 6.30–7.30pm (online) and Friday morning 9.30–10.30am (in person). These are run on a half termly basis.

Please contact Catherine Jones at cathjones@talktalk.net or call 07990 513434 for further information on any of the classes.

Catherine is a fully certified Exercise to Music Instructor/Older Adults Instructor/Bootcamp Instructor (member of CIMSPA).

Chat-Tea Café



Chat-Tea Café is a free café welcoming the elderly in the Winchester community who might benefit from some company and cake.

We are at Badger Farm Community Centre on the last Monday of the month and offer a warm welcome to anyone who would like to drop in.



Badger Farm
Community
Center
2PM to 4PM

Upcoming dates

- 31 July
- No August Café
- 25 September
- 30 October
- 27 November

More information :

 chat-tea.co.uk

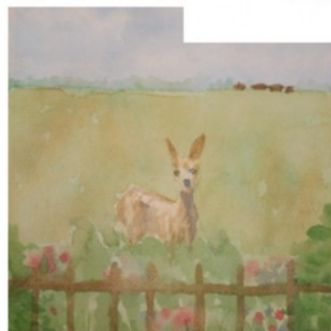
Badger Farm Art Group

We have been working hard and have produced lots of beautiful paintings. One of our recent themes was Spring. We were looking at landscapes, gardens and flowers and were working in a variety of materials. We are currently working on animal textures, such as scales, feathers and fur, using some very creative watercolour techniques. We often look at specific artists and refer to artworks from different cultures and time periods.

Badger Farm Art Group runs on Thursday afternoons, 1.30–3.30pm. If you would like to join us, or if you know anyone that is interested in Art, please come and say hello. Your first session is free, and there is no expectation for you to come every week. It is a lovely friendly group, who enjoys meeting up, having a cup of tea and a chat, and doing some painting of course! Please contact Sarah if you are interested snippycards@hotmail.co.uk.



Landscapes, gardens and flowers



Winchester Gardening Club

By the time you read this, summer will hopefully still be in full swing but thoughts might nevertheless veer towards autumn-time occasionally and the calming down of a busy season in the garden. The long dry period in May/June confronted us with some real challenges. We began to long for rain, didn't we, and some respite from the almost daily time-consuming watering, so necessary, especially in the vegetable garden. As the outdoor work eases off a little, you may enjoy attending one of our monthly meetings at St. Mark's Church Hall. Our programme offers the following talks over the next few months:

August 9 FLOWER OF RESERVES AND ROADSIDES, with speaker Gerald Ponting whose presentations are always a treat. There will be a mini Late Summer Show taking place alongside.

September 13 COPPICING AND ITS CRAFTSMEN, with speakers Chris and John Westcott, the woodland experts. They have an interesting story to tell and do it well.

We meet on the second Wednesday of every month, 7.30pm, at St. Mark's Church Hall, Oliver's Battery Road, Winchester SO22 4EU. New members (£20) and visitors (£4) are always welcome. We look forward to meeting you. For further information please visit wingardenclub.weebly.com.

Ladder safety

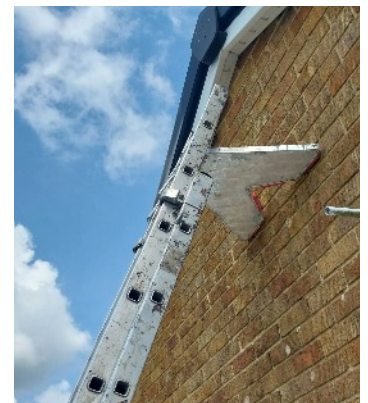
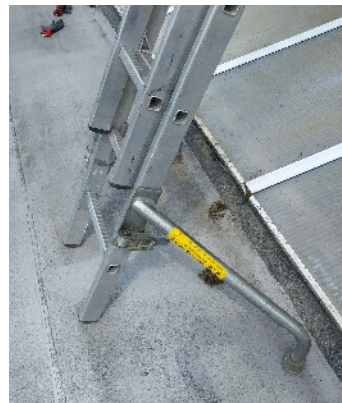
It's the time of year when hedges need to be cut, windows painted, gutters cleared to name but a few tasks that involve working at height. As 24% of domestic injuries arise from accidents whilst working at height (HSE 2023) here are some very simple and obvious rules to follow to ensure that you are as safe as you can be when using either step ladders or longer extension ladders. However, it's worth trying to avoid working at height unless you have to. Bear in mind that a professional person should have a much greater range of safety tools around the use of a ladder.

DO Check the ladder prior to using to ensure it's in good working order and fit for purpose ~ Set the ladder on a firm and level ground using large sections of robust material (wood) to create a firm, level base if ground is uneven ~ Check the base and top are firmly set prior to climbing the ladder ~ Maintain a 3-point contact (two hands and a foot, or two feet and a hand) and face the ladder when climbing or descending ~ Keep the body inside the side rails ~ Use extra care when getting on or off the ladder at the top or bottom ~ Avoid tipping the ladder over sideways or causing the ladder base to slide out. Avoid overreaching as this destabilises the ladder ~ Carry tools in a tool belt or raise tools up using a hand line. Never carry tools in your hands while climbing up/down a ladder ~ Extend the top of the ladder three feet above the landing area ~ Keep ladders free of any slippery materials ~ Ensure the slope at base of the ladder is either flat or sloping inwards from the ladder.

October 11 INTERACTIVE PRUNING under the guidance of Sparsholt lecturer Chris Bird, a demonstration of how it's done combined with plenty of useful advice.

November 8 THE WINTER GARDEN, a talk by Mark Porter, Hampshire Organiser for the National Garden Scheme, which promises to be quite inspiring.

DON'T Place a ladder on boxes, barrels, or unstable bases ~ Use a ladder on soft ground or unstable footing ~ Exceed the ladder's maximum load rating. All data is detailed in bold on the side of ladders ~ Tie two ladders together to make them longer ~ Ignore nearby overhead power lines ~ Move or shift a ladder with a person or equipment on the ladder ~ Lean out beyond the ladder's side rails or lean back ~ Use an extension ladder horizontally like a platform.



There are numerous pieces of safety equipment that can be used with ladders: stabilising supports (above left) that strap to the bottom of the ladder add significant support and stability; a stand off tray (above right) that fits to the top of the ladder provides stability and an area to place tools whilst working.

Have a safe and enjoyable summer.

Tim Newcombe | TALLTIM Property Services | 07880 600080



No job too small.

Available for all your handyman needs. To find out more, book a service or get a quote, please call 07880 600080

Tim Newcombe | 6ft 5"
www.talltim81.com | talltim81@gmail.com



Stanmore Primary

We are celebrating our value of excellence this term, with more success from the fantastic children of Stanmore Primary School. The choir performed at Winchester Cathedral as part of the massed choir of Winchester Schools conducted by Chris Burton from Pilgrims. The 45-minute impressive set showcased a range of songs including: an Irish Blessing, an old English Folk song, a Beatles classic and 'You've got a Friend in Me' from Toy Story. Our choir was well prepared by Mrs Mitton and looked professional in our music t-shirts complete with school logo, purchased by the Friends of the School. The behaviour was excellent, including during the long, hot walk to the Cathedral. I was proud to receive an email congratulating us on our performance and inviting Stanmore to take part in the next collaboration between Pilgrims, Winchester College and the Winchester Primary Schools.

Our School Orchestra joined with Kings' School to treat the audience to Pirates of the Caribbean and Sweet Caroline. Our new young brass payers gave an enthusiastic performance as part of their 'Beyond the Beat' programme.



Music is not the only cause for celebration; our swimming team enjoyed competing at the Winchester Schools Gala this term. Our dance squad won the Intergr8 dance-off at the Theatre Royal. Our Stanmore mathematicians received gold and silver certificates at the Winchester College Maths Challenge Awards. The children who participated thoroughly enjoyed the maths challenges and the cake! Our annual 'Reading' Festival and an inspiring visit from Luke Delahunty, an Invictus Games athlete, completes the range of activities that enable our talented children to shine in all areas of the curriculum. Congratulations Stanmore pupils, this has been another excellent term.

Sharon Taylor,
Headteacher, Stanmore Primary School
stanmore.hants.sch.uk

Wishing you well

We all know that self-care is important to our mental and physical health and wellbeing. And we probably know, at least in part, how to practice self-care. So, in the words of Nike 'just do it!' If only it was that straightforward. In fact, if looking after our body and mind – the vehicles that carry us through life – was that simple, we would all be 'just doing it'.

If you are looking to make changes in your own life to benefit your health, there are some quick links to local, national or international doctors offering often-free information, podcasts, etc on atnutritiontuition.co.uk/making-time.

Here though are some important updates you may like to know about. Firstly we are lucky to have two local medical doctors who also specialise in additional ways of optimising diet, movement, integrated health, wellness and wellbeing.

For example, if you fancy the sound of online conscious dance medicine, click here to join Dr Indike's free Facebook group for women [facebook.com/groups/danceajoyfullifewithindika](https://www.facebook.com/groups/danceajoyfullifewithindika). Or Dr Fuller-Shavel's website which offers podcasts synthesisclinic.co.uk/synthesisclinicpodcast. And **STOP PRESS** newly-available free ONCIO app for Integrated Oncology in Action oncio.org.

There is a new, free real food lifestyle course offered by the doctors, dietitians, nutritionists, etc at The Public Health Collaboration. You can watch all 8 sessions on the PHC's

YouTube channel [youtube.com/watch?v=LI10FEPfBCI](https://www.youtube.com/watch?v=LI10FEPfBCI). And then if you'd like a helping hand for further support, you can join the free weekly lifestyle support group. Sign up on phcuk.org/support.

The small decisions we make each day add up to changing our life for the better. Do you find that making time for our health is not always as easy as it sounds? There is so much often-conflicting information out there. We are all so different and it is often confusing to know what are probably the best foods/drinks for each of us individually. And as for exercise, is it better to stress yourself out more at the gym or do slower, more mindful moves?

Help to make the right choices, lose weight and gain wellbeing

That's where Health Coaches and/or Registered Nutritional Therapy Practitioners come in, depending on your health aims. These health professionals are also trained in providing you with cheerful support and motivational techniques to help you to stick to your personalised, tailor-made healthier new habits, doing the movements/exercises, eating the agreed food plan and finding ways to make time for your wellness, be it weight loss or gaining wellbeing.

Amanda Turner ATnutritiontuition.co.uk

This is general information, not advice. For a more thorough and personalised 'Nutritional MOT' plus ongoing support and motivation, consider consulting with a trained registered Nutritional Therapy Practitioner listed on BANT (bant.org.uk). As part of charity/community work, Amanda is also a volunteer Ambassador for the Public Health Collaboration.

St Peter's Catholic Primary

Ofsted celebrates diversity and inclusivity at St Peter's School

Did you know we have 25 different languages spoken in our family homes? How amazing is that? This is something that makes us unique and makes us who we are. We welcome children not only from a wide variety of countries and heritages but also from various faith backgrounds – while some of our families have no religious belief but recognise that children do well at St Peter's.

Our recent Ofsted in March 2023 recognised this by reporting, 'At St Peter's, children learn and grow in a happy, secure and nurturing environment. Parents enthuse about how inclusive the school is and value how it welcomes and celebrates children from all faiths and backgrounds. Pupils love coming to school, delight in their learning, and they achieve well.'

St Peter's School always enjoys celebrating Pentecost and this year the student council wanted to plan something that would celebrate how diverse and special our school is. Children were invited to dress in clothing that represented themselves and their family, following the theme, 'This is me. This is us.' We spent time sharing our heritage and the things that make us unique and special, including dances, types of food, celebrations and favourite activities. Later in the day, the whole school gathered for cake on the field as we celebrated the Church's birthday.



Reya says, 'I wore an Indian outfit because I come from India. Wearing my special outfit makes me feel good – but it can be a bit itchy.'

Another aspect that our Ofsted report celebrates is our academic excellence. Did you know we are in the top 20% nationally for attainment and progress in all national assessments? 'Passionate and inspiring senior leadership underpins the shared ambition and high standards achieved. As they progress through the school, pupils respond to teachers' high expectations and immerse themselves into all that the school offers. They are supported to gain confidence and become more independent learners, well prepared for their next stages of education.

Staff know each child as an individual, nurturing warm and trusting relationships so that they feel safe and secure. Should any unkindness or bullying occur, leaders take swift and effective action. Pupils show genuine empathy and respect for their peers. They trust staff to resolve any worries they may have.'

Finally, the report recognises our wonderful pupils, who work so hard to be the best they can be. We call that hav-

ing 'The St Peter's Polish'. 'Pupils' behaviour is typically impressive. Pupils socialise well and play happily at breaktimes. They move around the school sensibly and are polite to visitors. Pupils really value the school's golden rules and the rewards and routines. Any disruption is rare.'

To read the report in full please go to stpetershants.co.uk/ofsted-and-performance-data. If you would like to visit St Peter's and have a tour with the headteacher please phone the school office 01962 852820.

Little Fishes Pre-School

The Summer Term has brought with it the most glorious weather enabling the children at Little Fishes to spend many hours playing and learning outdoors. We are blessed to have the most beautiful garden and outdoor spaces here at St Peter's School.

Our garden at Little Fishes offers the children a safe and inviting environment to explore and discover, try out new skills, engage with nature, and delight in the world around them throughout the seasons. On our last Inset Day, the staff spent time developing our outdoors spaces, giving our garden a bit of make-over. This included installing a new sit-in sandpit. We also have areas for water play, growing vegetables, a mud kitchen, riding tricycles, playing football and much more! No sooner had we designed our garden, a few days later



My favourite birds are swans; perhaps too regal to be labelled 'birds'. Swans are so majestic and elegant. They have partners for life, caring for their cygnets with gentle passion, unless someone approaches too close.

Swans bring such glory to the River Itchen. If lucky you can witness them taking off! More like Concord; combining grace and pure magnificence. So beautiful, so dramatic: Representing Nature's Monarchy. Freeing the imagination, a swan can transport you on a dream far above and beyond. Witnessing a swan landing upon the Itchen, greeted by its partner, is rather special. The Itchen has much to offer, and swans project such majesty.

A walk on the bright side



Simon Lever

a family of Tree Bumble Bees moved into one of our bird nesting boxes and made their nest. The children are fascinated by the bees and so much learning is taking place, including learning about the lifecycle of a bee and tasting honey. We are happy our bees love our garden as much as we do.

Every day when we say our prayers, we thank God for our Little Fishes friends and for the special place we share and learn together.

Tech Talk

The issue of environmental protection has become increasingly important. As we look for ways to support sustainability, here are some simple steps you can take with your tech.

Save energy Use your device's power and battery efficiency settings to cut down on the amount of power it uses. Simple things like turning down the screen brightness or putting your device to sleep as soon as you stop using it all help. Don't charge your device too much; keep your battery's charge between 20–80% to maximise its life (androidauthority.com/maximize-battery-life-882395).

Browse green When using the web, consider prioritising websites that have strong green credentials. The tech giants we can't avoid – Microsoft, Google, Apple and Amazon – have committed to becoming carbon neutral, or even negative, in the next few years (bit.ly/WCT-co2neutral). For other websites, use tools like the Website Carbon Calculator (websitecarbon.com) or the Website Footprint browser extension (website-footprint.com) to assess their sustainability.

Offset your usage As recommended by MakeUseOf in makeuseof.com/chrome-extensions-save-planet, apps such as Ecosia (ecosia.org) and OurForest (ourforest.io) fund tree planting using the profits from ads shown when you search or simply open a tab in your browser.

Reduce paper usage Take notes and write documents digitally. Don't print emails or documents unless it's essential.



Read digital rather than physical books. You don't need a new device; just use one of the free ebook reader apps on your smartphone or tablet (bit.ly/WCT-ebookreaders). This not only saves trees but also reduces the energy and resources required to produce paper.

Recycle Electronic waste is a growing problem, with millions of tons generated every year. Reduce e-waste and its negative impact on the environment by using devices for as long as possible and disposing of them responsibly. Companies such as Southampton-based Jamie's Computers, a social enterprise, 'professionally and ethically recycle a wide range of IT and computer equipment' (jamies.org.uk). Recycle consumables such as ink cartridges; most printer manufacturers have free recycling programmes for genuine cartridges. I've also sometimes seen printer ink recycling envelopes in Tesco.

Our devices can be a tool in the fight against climate change and the protection of our planet. By using them responsibly, we can reduce our impact on the environment. They can also help us stay informed and engaged, letting us research eco-friendly products, read about sustainable living and connect with like-minded individuals and organisations. Let's harness the power of technology to support a more sustainable world, for ourselves and for future generations.

Ann Jury | ann@winchestercomputertutor.co.uk

01962 626130 | 07747 779313

winchestercomputertutor.co.uk/sustainable-technology

Hedgehog Highways

We need your help!



Do you have hedgehogs in your garden?

Please help us to track where hedgehogs are within Olivers Battery by completing and returning the form overleaf.

Hedgehog Sightings Form

You can record your sightings in three ways:

1. Complete and return this form to the box in the post office
2. Email the answers to the questions to: **obhedghogs@gmail.com**
3. Complete the google form via the link: **<https://forms.gle/NWZ2B6oneJgZHDK67>**

Hedgehogs are nocturnal and should only come out at night, so it's likely that you won't see the hedgehog itself. However, we can track where hedgehogs have visited through sightings of their poo. Please help by sharing your sightings of either hedgehogs or their poo.

Sightings: Hedgehog
Poo



Hedgehog poo (~5cm long)

Date: _____

Address: _____

Postcode: _____

Please include your email address if you would like to be kept updated on the progress of the project:

Nature Notes

Balmy evenings in the garden

As the sun goes down on another glorious sunny day in June, my garden and those of my neighbours play host to a variety of night-time visitors. A couple of Pipistrelle bats are regulars. Their flight is fast and fluttery as they keep a regular path, backwards and forwards around the trees, bushes and houses. They are hunting small moths and tiny insects such as mosquitoes, using echolocation, tiny clicks which can pinpoint their prey's whereabouts.

Up to 3,000 tiny insects can be eaten in one night. Pipistrelles are one of our smallest bats with a wingspan of 22 centimetres, or 8 inches, and weigh just 59 grams. During the summer they like to roost together in a warm space such as behind wall tiles on a house or in a hollow tree. In winter they prefer a cool dry area like an attic or barn. Babies are born in June or July and live on their mother's milk for four to six weeks by which time they can forage for themselves. You can also watch bats flitting along the hedgerows bordering fields and especially by water. There are eighteen species of bats in the UK, but populations have declined due to modern agricultural practices, lack of wild spaces and house renovations. If you are interested and want to know more about



© Wendy Bramall

these fascinating creatures, the Bat Conservation Trust bats.org.uk has a lot of useful information.

It had been a couple of years since I've noticed any sign of hedgehog activity in my garden. A few of my neighbours had seen evidence (poo) so I was keeping my hopes high of seeing one of these endearing creatures snuffling about. I was rewarded last week after calling George my dog inside before bed-time when I spotted a large prickly round ball in the middle of the lawn. I put out some wet dog food

(cat food will do too) and a bowl of water and retired to the house to watch it uncurl and enjoy its meal. The weather has been so hot recently they must be finding it difficult to find worms, slugs and snails. The next evening I spotted two hogs so who knows, we may have a family soon. Along our street we have created a hedgehog highway consisting of holes in the fences where they can move freely between gardens. If you want to make a hedgehog highway this is a good website to view: somersetwildlife.org/actions/how-create-hedgehog-hole.

Wendy Bramall

Instagram @wendybeez60 | Facebook Wendy Bramall Illustration
wendy.bramall@btinternet.com | wendybramall.co.uk

Badger Farm & Oliver's Battery Parish Council Meetings

Our parish councils meet monthly and members of the public are welcome to attend.



Badger Farm Parish Council meets at 7.30pm on the 2nd Monday of each month (except August) at Badger Farm Community Centre. For more information, please check the council website (badgerfarm-pc.gov.uk) or contact the clerk, Christine Howe clerk@badgerfarm-pc.gov.uk.

Oliver's Battery Parish Council

Please see the Parish Council website (oliversbattery.info) and Facebook page (@OliversBatteryParishCouncil) for information on the dates, times and location of future meetings.

Contact the clerk, Brendan Gibbs clerkoliversbattery@gmail.com.



Community News

BECOME A SPONSOR

Our sponsors help us keep our local community informed.

Join them!

In return see:

- Your advert in Community News distributed to all households in Badger Farm & Oliver's Battery
- Your advert included on our website and social media (annual sponsors only)

To find out more, contact enquiries@bfobrca.org or call 01962 868630

If you have a community contribution or would like to advertise with us, please get in touch.

Editorial deadline for our next issue:

Friday 3 November 2023

Editor: Ann Jury

Editorial email: bfobrca.cnews@gmail.com



Published by Badger Farm & Oliver's Battery Residents' Community Association

Email ~ enquiries@bfobrca.org ~ Tel. 01962 868630 ~ www.bfobrca.org

Registered Charity No. 279592